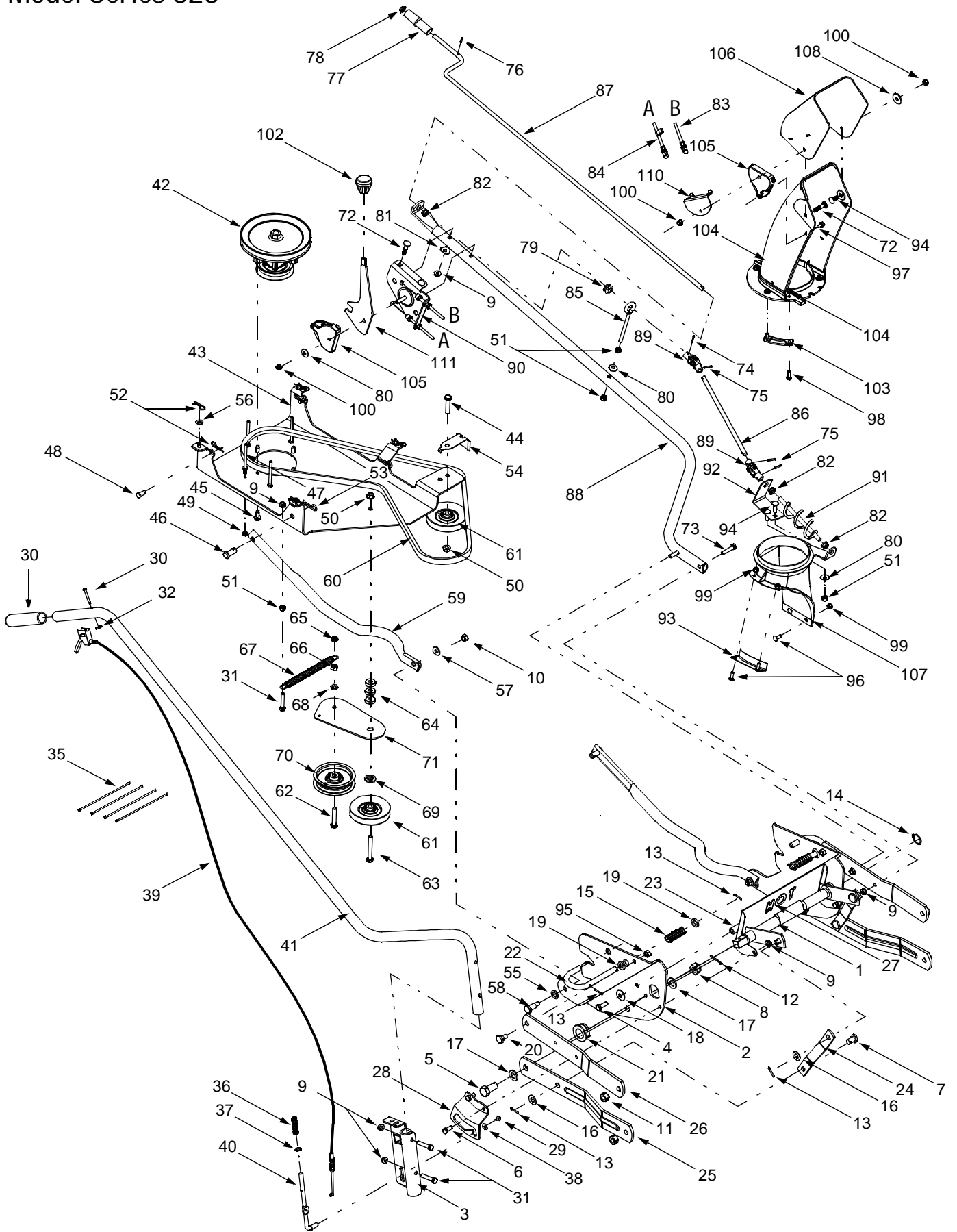


# Model Series 823



# Model Series 823

REF. NO.	PART NO.	DESCRIPTION	REF. NO.	PART NO.	DESCRIPTION
1	611-0132	Rod Assembly	58	738-0145	Shoulder Screw, 3/8-16, .5 x .835,
2	684-0150	RH Support Plate Assembly	59	749-1104	RH Support Tube
	684-0151	LH Support Plate Assembly		749-1103	LH Support Tube
3	683-0298	Lift Bracket Assembly	60	754-0371A	Upper V-belt*
4	710-0514	Hex Cap Screw, 3/8-16 x 1.0		754-0481	Upper V-belt*
5	710-0964A	Hex Cap Screw, 5/8-18 x 1.31		754-0435	Upper V-belt*
6	710-3008	Hex Cap Screw, 5/16-18 x .75	61	756-0487	Idler pulley, 4" Diameter
7	711-0332	Clevis Pin, .5 x .78	62	710-0151	Hex Cap Screw, 3/8-24 x 2
8	712-0386A	Slotted Hex Nut, 5/8-18	63	710-0521	Hex Cap Screw, 3/8-16 x 3
9	712-3004A	Flange Lock Nut, 5/16-18	64	711-0242	Spacer
10	712-3017	Hex Nut, 3/8-16	65	712-0116	Nylon Jam Lock Nut, 3/8-24
11	712-3022	Hex Lock Nut, 1/2-13	66	712-0241	Hex Nut, 3/8-24
12	714-0470	Cotter Pin, 1/8 x 1.25	67	732-0978	Extension Spring, .620 x 5.62
13	714-0474	Cotter Pin, .125 x .75	68	736-0169	Lock Washer, 3/8
14	716-0102	Snap Ring	69	738-0347	Shoulder Spacer, .625 x .169
15	732-0987	Compression Spring, .72 x 2.25	70	756-0627B	Idler Pulley, 3.5" Diameter
16	736-0272	Flat Washer, .51 x 1.0 x .060	71	784-5727	Idler Pivot Arm
17	736-0366	Flat Washer, .64 x 1.12 x .125	72	710-0262	Carriage Bolt, 5/16-18 x 1.5
18	736-0452	Bell Washer, .396 x 1.14 x .095	73	710-0805	Hex Cap Screw, 5/16-18 x 1.5
19	736-3069	Flat Washer, .531 x .875 x .15	74	714-0507	Cotter Pin, 3/32 x .75
20	738-0234	Shoulder Screw, .5 x .29, 3/8-16	75	715-0129	Spirol Pin, .125 x .82
21	741-0170	Flange Bearing w/ Flats	76	715-0138	Rolled Pin, 1/8 x .63
22	747-1191	Handle Rod	77	720-0201A	Crank Knob
23	747-1192	Rod, 1/2 x 11.55	78	726-0100	Push Cap, 3/8 ID
24	783-0876	Link, 5.875	79	735-0234	Rubber Grommet, .44 x .94 x .5
25	783-0877	Link, 15.3	80	736-0242	Bell Washer, .34 x .872
26	783-0878	Link, 13.25	81	736-0451	Saddle Washer, .32 x .93
27	783-1274A	Heat Shield	82	741-0475	Plastic Bushing
28	703-2728A	Snow Thrower Lift Bracket	83	746-1108	Chute Cable, 62"
29	710-1268	Hex Index Washer Screw #10-16 x .375	84	746-1109	Chute Cable w/ Clip, 62"
30	710-3143	Pan Phillips Screw, #10-24 x .75	85	747-0697	Eye Bolt
31	710-3108	Hex Cap Screw, 5/16-18 x 1.75	86	747-0932	Rod, .375 x 11.375
32	712-0127	Flat Weld Nut, #10-24	87	747-1201	Chute Crank Rod, .375 x 33
33	715-0114	Heavy Duty Spirol Pin, 1/4 x 1.5	88	750-1231	Support Chute Tube
34	720-0274	Handle Grip	89	784-5149	Joint Block Assembly
35	725-0157	Cable Tie	90	603-0302	Chute Tilt Bracket Assembly
36	732-0306	Compression Spring, .406 x .531 x 1.75	91	684-0061	Chute Crank Assembly
37	736-0140	Flat Washer, .385 x .62 x .063	92	703-2735A	Chute Crank Bracket
38	736-0400	Flat Washer, .194 x .62 x .063	93	705-5226	Chute Reinforcer
39	746-1103	Lift Cable, 42" w/ Trigger Control	94	710-0276	Splined Carriage Screw, 5/16-18 x 1.0
40	747-1203	Lift Index Rod	95	712-3000	Hex Lock Nut, 3/8-16
41	750-1221	Lift Handle Tube	96	710-0703	Screw, 1/4-20 x .75
42	618-0411	Spindle Assembly	97	710-0896	Hex Index Washer Screw, 1/4-14 x .625
43	683-0306	Pulley Mounting Bracket	98	710-3015	Hex Cap Screw, 1/4-20 x .75
44	710-0347	Hex Cap Screw, 3/8-16 x 1.75	99	712-0324	Nylon Hex Lock Nut, 1/4-20
45	710-1260A	Self Tapping Screw, 5/16-18 x .75	100	712-0429	Nylon Hex Lock Nut, 5/16-18
46	711-0310	Clevis Pin, .5 x 1.18	101	712-3027	Hex Flange Lock Nut, 1/4-20
47	711-1000	Belt Keeper Pin	102	720-0232	Knob
48	711-1421	Clevis Pin, 3/8 x .75	103	731-0851A	Chute Flange Keeper
49	712-0291	Hex Lock Nut, 1/4-20	104	731-1300A	Lower Chute
50	712-0431	Hex Flange Lock Nut, 3/8-24	105	731-1313C	Chute Tilt Cable Guide
51	712-3010	Hex Nut, 5/16-18	106	731-1320	Upper Chute
52	714-0145	Click Pin, .092 x 1.64	107	731-1379C	Adapter Chute
53	714-0147	Internal Cotter Pin, .125 x 1.75	108	736-0231	Flat Washer, .344 x 1.125 x .125
54	732-0990	Belt Guard	109	736-0463	Flat Washer, .25 x .63 x .0515
55	736-0192	Flat Washer, .531 x .93 x .09	110	784-5594	Cable Bracket
56	736-0275	Flat Washer, .344 x .688 x .065	111	784-5604	Chute Tilt Handle
57	736-3072	Flat Washer, .38 x .93 x .11	112	784-5647	Chute Crank Bracket

\* Refer to the table on page 6 for your tractor's applicable upper v-belt.