

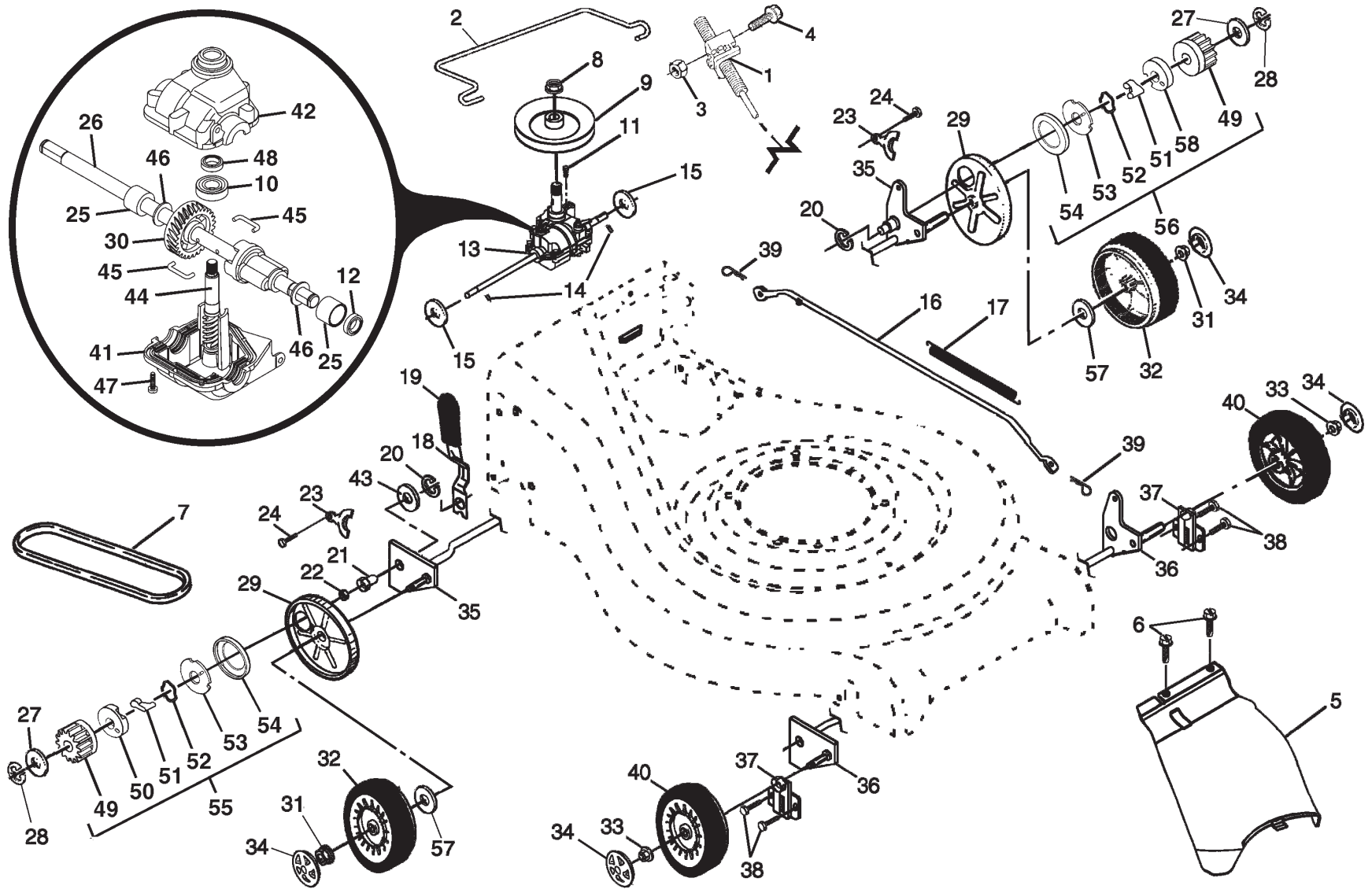
ROTARY LAWN MOWER - - MODEL NUMBER PR55R21A (PR55R21AD)

KEY NO.	PART NO.	DESCRIPTION
1	189663X479	Handle, Upper
2	161105X479	Handle, Lower
3	186053	Spring, Rear Door, RH
4	179585	Guide, Rope, Side
5	132004	Nut, Hex, with Lockwasher Insert 1/4-20
6	66426	Wire, Tie
7	131959	Bolt, Handle 5/16-18 x 2-5/8
8	136376	Knob, Handle
9	182810	Control Bar
10	188821	Bolt, Carriage
11	73990500	Nut, Hex, with Lockwasher Insert 5/16-18 UNC
12	51793	Cotter, Hairpin
13	186052	Spring, Rear Door, LH
16	185855X428	Kit, Rear Door (Includes Springs)
17	184193	Bolt, Rear Door
18	187535	Plug, Mulcher
19	181763	Kit, Housing
20	187249X479	Handle Bracket Asembly, LH
21	187250X479	Handle Bracket Assembly, RH
22	150078	Screw, Hex Washer Head
23	163183	Bolt, Hex Head 5/16-18 x 5/8
24	73800500	Nut, Hex, with Lockwasher Insert 5/16-18
25	161333	Baffle, Side
26	163409	Screw #12 x 5/8
27	188986	Skirt, Rear
28	88652	Screw, Hinge 1/4-20 x 1.25
29	182755	Cable, Engine Zone Control
31	189028	Blade, 21"
34	851084	Bolt, Hex Head
37	150406	Bolt, Engine
38	---	Engine, Honda, Model Number GCV-160 (For engine service and replacement parts, call Honda at 1-800-426-7701)

KEY NO.	PART NO.	DESCRIPTION
39	189004	Grass Bag
40	188817	Frame, Grass Bag
41	107339X	Danger Decal
57	179783X004	Bracket Assembly
58	57808	Screw
59	184543	Pulley, V-Groove, Idler
61	145212	Flange Nut
62	155552	Locknut
63	179719X004	Idler Arm
64	166043	Idler Pulley
65	160829	Shoulder Bolt
66	183058X428	Mulcher Door Assembly
67	169699X428	Discharge Guard
68	88349	Nut, Hex
76	850733X004	Bracket, Upstop
77	750634	Screw
84	54583	Screw
85	187723	Key, Hi-Pro
86	184941	Pulley
87	851074	Washer
88	850263	Washer, Lock
89	184590	Blade Adapter
90	189185	Debris Shield
91	182227	Bolt
92	188244	Belt Keeper
93	182228	Nut, Hex
--	162300	Warning Decal (Not Shown)
--	172787	Operator's Manual, English
--	172788	Operator's Manual, French
--	190128	Repair Parts Manual, English / French

NOTE: All component dimensions given in U.S. inches.
1 inch = 25.4 mm

ROTARY LAWN MOWER - - MODEL NUMBER PR55R21A (PR55R21AD)



ROTARY LAWN MOWER - - MODEL NUMBER PR55R21A (PR55R21AD)

KEY NO.	PART NO.	DESCRIPTION
1	189181	Drive Control Assembly
2	188975	Control Bar, Drive
3	751152	Nut, Hex
4	185681	Screw
5	161537	Cover Drive
6	750634	Screw, Threaded, Rolled #10-25 x .50
7	182212	V-Belt
8	132010	Nut, Flangelock, Zinc Plated 3/8-16
9	184749	Pulley, Drive
10	183506	Bearing, Ball
11	187653	Screw
12	183508	Seal, Output Shaft
13	187213	Gear Case Assembly, Complete
14	145354	Pin, Spring, Thrust
15	57079	Washer, Hardened
16	161584	Rod, Connecting
17	161602	Spring, Extension
18	160477X004	Spring, Selector
19	171321	Knob, Selector Spring
20	12000022	E-Ring 7/8
21	163365	Bearing, Support
22	169911	Bearing, Ball
23	161118X004	Retainer, Drive Assembly
24	57808	Screw, Tapping, Hex Head 1/4-20 x .75
25	183511	Bushing
26	187534	Shaft, Output
27	52160	Washer, Shim (as required)
28	12000058	E-Ring 7/16
29	180504	Cover, Dust, Wheel
30	187532	Gear, 24 Teeth

KEY NO.	PART NO.	DESCRIPTION
31	145212	Nut, Flangelock
32	180764	Wheel 9 x 2
33	83923	Nut, Flangelock 3/8-16
34	77400	Hubcap, Mag, Platinum
35	160785X004	Shaft Assembly, Rear
36	160786X004	Shaft Assembly, Front
37	161463	Retainer, Front Shaft
38	163409	Screw #12 x 5/8
39	700279	Clip, Retainer
40	172297	Wheel 8 x 2
41	187530	Case, Lower (Use Dow Corning #709 to reseal)
42	187531	Case, Upper (Use Dow Corning #709 to reseal)
43	19572216	Washer
44	187533	Shaft, Input
45	183505	Wire, Formed
46	183509	Washer
47	183513	Screw
48	183514	Seal, Input Shaft
49	175103	Pinion, Gear
50	175102	Retainer, Drive, RH
51	175098	Pawl
52	188291	Spring, Torsion
53	175104	Disc, Drive
54	175101	Seal, Friction
55	188293	Pinion/Pawl Assembly, RH
56	188292	Pinion/Pawl Assembly, LH
57	67725	Washer
58	175105	Retainer, Drive, LH

NOTE: All component dimensions given in U.S. inches.
1 inch = 25.4 mm