

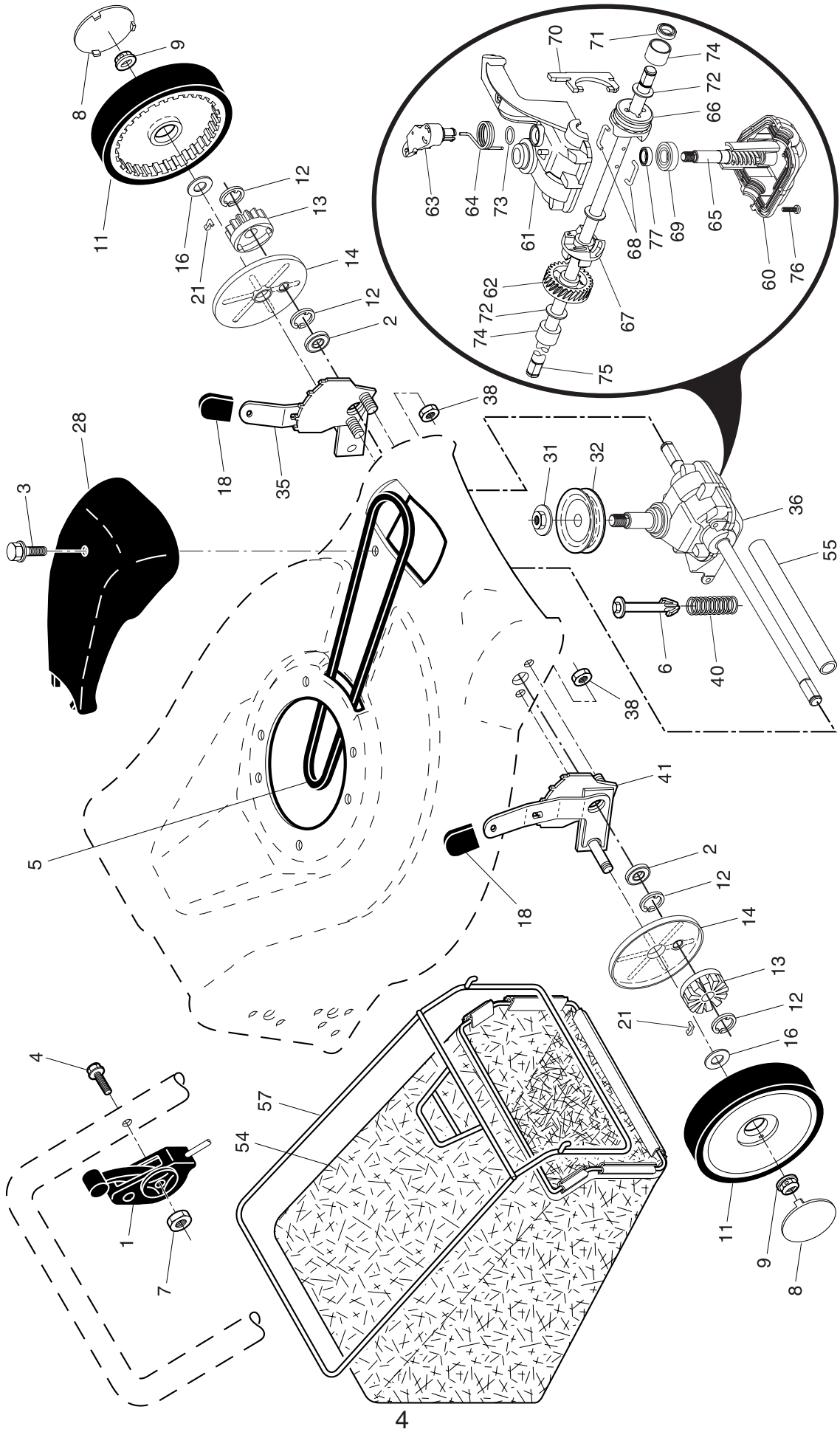
ROTARY LAWN MOWER - - MODEL NUMBER HD6X (MFG. ID. NUMBER 96146000101)

KEY NO.	PART NO.	DESCRIPTION	KEY NO.	PART NO.	DESCRIPTION
1	183496X479	Upper Handle	28	189312	Shoulder Bolt 5/16-18 x 1-21/64
2	151721X479	Lower Handle	30	189596X004	Axle Arm Assembly, Rear, RH
3	146771	Control Bar	31	170143	Selector Knob
4	183567	Engine Zone Control Cable	32	175060X004	Selector Spring
5	191574	Handle Bolt	34	189597X004	Axle Arm Assembly, Rear, LH
6	189713X428	Handle Knob	35	77400	Hubcap
7	51793	Hairpin Cotter	36	184193	Bolt, Rear Door
8	66426	Wire Tie	38	176185	Washer, Step 1 1/32 x 1-3/8 x 7/32
9	180479	Kit, Rear Door (Includes Key Numbers 16 and 17)	39	176235	Push Nut
10	128415	Pop Rivet	40	188839X004	Mounting Bracket, Debris Shield
11	175069X479	Support Bracket, LH	41	192325	Screw, Debris Shield
12	175070X479	Support Bracket, RH	43	188784	Debris Shield
13	17060410	Screw, Tapping 1/4-20 x 5/8	44	195010	Kit, Lawn Mower Housing (Includes Key Numbers 11, 12 and 45)
14	175082X479	Handle Bracket Assembly, LH	45	107339X	Danger Decal
15	175081X479	Handle Bracket Assembly, RH	46	189179	Blade Adapter / Pulley
16	180071	Spring, Rear Door, LH	47	189028	Blade, 21"
17	180072	Spring, Rear Door, RH	48	851074	Hardened Washer
18	132004	Nut, Hex 1/4-20	49	850263	Helical Washer
19	179585	Rope Guide	96	192770	Clip, Cable
20	189005	Rear Skirt	--	162300	Warning Decal (not shown)
21	88652	Hinge Screw 1/4-20 x 1-1/4	--	193733	Operator's Manual, English
24	---	Engine, Briggs & Stratton, Model Number 125K02 (For engine service and replacement parts, call Briggs & Stratton at 1-800-233-3723)	--	193736	Operator's Manual, French
25	150406	Hex Head Thread Rolling Screw 3/8-16 x 1-1/8	--	195337	Replacement Parts Manual, English / French
26	83923	Hex Flange Nut			
27	194855	Wheel & Tire Assembly			

NOTE: All component dimensions given in U.S. inches.
1 inch = 25.4 mm

IMPORTANT: Use only Original Equipment Manufacturer (O.E.M.) replacement parts. Failure to do so could be hazardous, damage your lawn mower and void your warranty.

ROTARY LAWN MOWER -- MODEL NUMBER HD6X (MFG. ID. NUMBER 96146000101)



ROTARY LAWN MOWER - - MODEL NUMBER HD6X (MFG. ID. NUMBER 96146000101)

KEY NO.	PART NO.	DESCRIPTION	KEY NO.	PART NO.	DESCRIPTION
1	184587	Control Cable Assembly	54	194697	Grassbag
2	167387	Bearing, Wheel Adjuster	55	175739	Driveshaft Cover
3	175262	Pan Head Tapping Screw #10-24 x 2-3/4	57	188815	Frame, Grassbag
4	158755	Hex Washer Head Screw 1/4-20 x 2.12	60	183497	* Case, Lower
5	175436	V-Belt	61	183498	* Case, Upper
6	150495	Spring Retainer	62	183499	Gear, 27 Teeth
7	191730	Locknut, Hex #10-24	63	183500	Lever, Clutch
8	77400	Hubcap	64	183501	Spring, Return
9	145212	Nut, Flangelock, Special Thread	65	183502	Shaft, Input
11	194854	Wheel & Tire Assembly	66	183503	Dog, Movable
12	12000058	E-Ring	67	183504	Dog, Fixed
13	750003	Pinion	68	183505	Wire, Formed
14	189403	Dust Cover	69	183506	Bearing, Ball
16	67725	Washer 1/2 x 1-1/2 x .134	70	183507	Fork, Shift
18	170143	Selector Knob	71	183508	Seal, Output Shaft
21	191017	Pawl, Drive	72	183509	Washer
28	181466	Dive Cover	73	183510	Seal, Case
31	132010	Nut, Hex, Flanged, Zinc Plated 3/8-16	74	183511	Bushing
32	194126	Drive Pulley	75	196613	Shaft, Output
35	195354	Kit, Wheel Adjuster, LH (Includes Knob and Bearing)	76	183513	Screw
36	194935	Gear Case Assembly, Complete	77	183514	Seal, Input Shaft
38	73800400	Locknut, Hex 1/4-20			
40	137090	Spring			
41	195357	Kit, Wheel Adjuster, RH (Includes Knob and Bearing)			

* Use Dow Corning #709 to reseal Gear Case Halves.

NOTE: All component dimensions given in U.S. inches.
1 inch = 25.4 mm