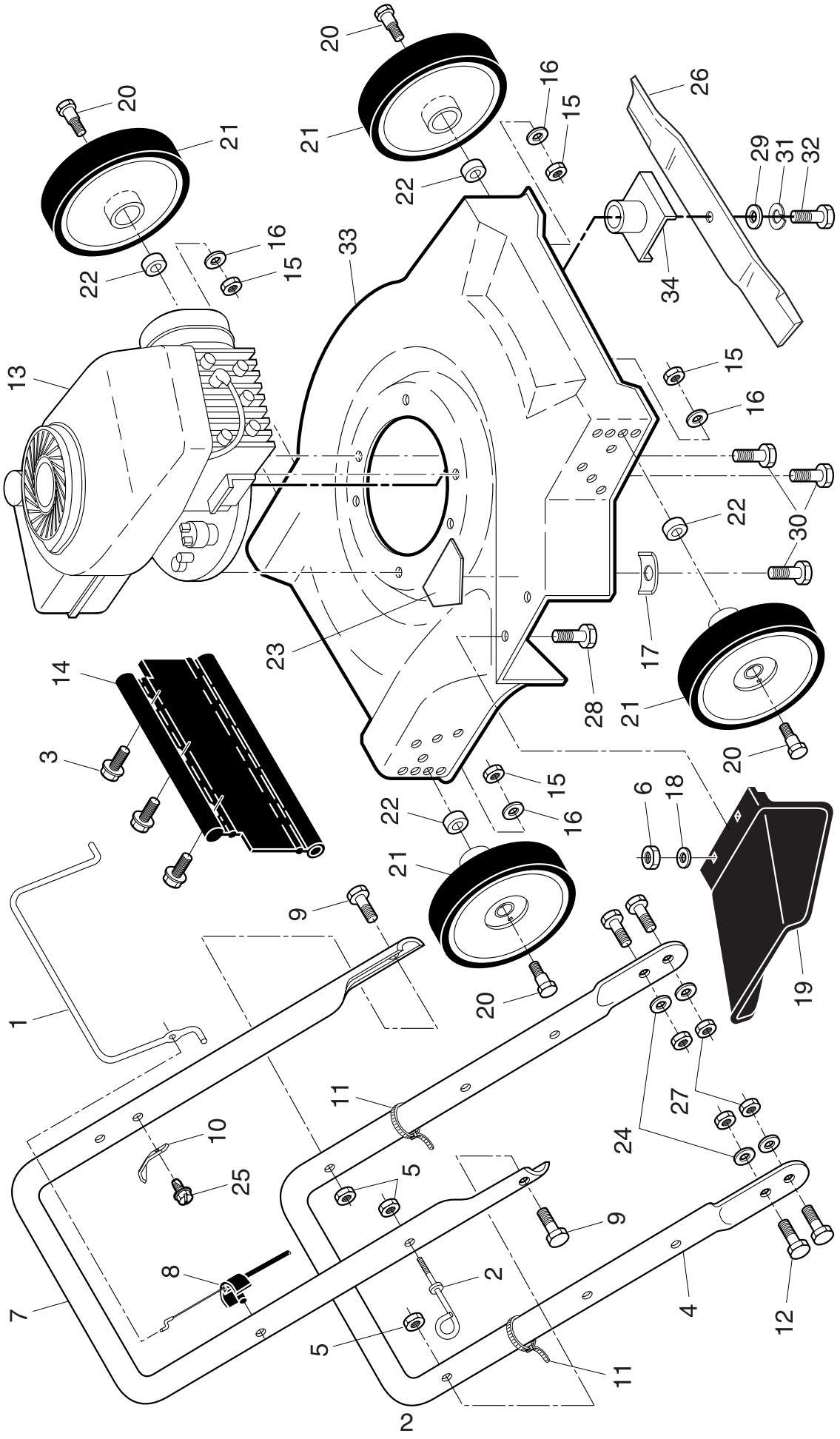


ROTARY LAWN MOWER -- MODEL NUMBER 96112000100



ROTARY LAWN MOWER - - MODEL NUMBER 96112000100

| KEY NO. | PART NO. | DESCRIPTION | KEY NO. | PART NO. | DESCRIPTION |
|---------|------------|---|---------|----------|---|
| 1 | 86902 | Control Bar | 22 | 136624 | Spacer |
| 2 | 179585 | Rope Guide | 23 | 141846 | Danger Decal |
| 3 | 189241 | Hex Washer Head Self-Tapping Screw | 24 | 55611 | Washer, Flat 3/8 |
| 4 | 172146X479 | Lower Handle | 25 | 750634 | Screw, Threaded, Rolled #10-24 x 1/2 |
| 5 | 132004 | Nut, Hex 1/4-20 | 26 | 145106 | Blade 20" |
| 6 | 73800400 | Locknut, Hex 1/4-20 | 27 | 132010 | Locknut, Hex, Flanged 3/8-16 |
| 7 | 169711X479 | Upper Handle | 28 | 74760412 | Bolt, Hex Head 1/4-20 x 3/4 |
| 8 | 158152 | Cable, Engine Zone Control | 29 | 851074 | Washer, Hardened |
| 9 | 74350424 | Bolt, Hex Head 1/4-20 x 1-1/2 | 30 | 150406 | Screw, Hex Head, Threaded, Rolled 3/8-16 x 1 |
| 10 | 850733X004 | Up-Stop Bracket | 31 | 850263 | Helical Lock Washer |
| 11 | 66426 | Wire Tie | 32 | 851084 | Screw, Machine, Hex Head, Grade 8, 3/8-24 x 1-3/8 |
| 12 | 137009 | Bolt, Hex Head 3/8-16 x 1 | 33 | 189625 | Housing Assembly |
| 13 | - - - | Engine, Tecumseh, Model Number LV148EA (For engine service and replacement parts, call Tecumseh Products at 1-800-558-5402) | 34 | 850977 | Blade Adapter |
| 14 | 189239 | Rear Skirt | - - | 161058 | Decal, Warning (not shown) |
| 15 | 751592 | Locknut, Hex 5/8- 16 | - - | 193747 | Operator's Manual, English |
| 16 | 61537 | Washer, Flat 25/64 x 1/4 x 29/32 | - - | 193750 | Operator's Manual, Spanish |
| 17 | 851201X004 | Washer, Engine | - - | 193793 | Repair Parts Manual |
| 18 | 53847 | Washer, Flat 1/4 | | | |
| 19 | 752052 | Discharge Guard | | | |
| 20 | 67609 | Bolt, Shoulder 3/8-16 x 2-1/2 | | | |
| 21 | 800060 | Wheel & Tire Assembly | | | |
| | | | | | Available accessories not included with mower: |
| | | | - - | GCK3200 | Grass Catcher |

NOTE: All component dimensions given in U.S. inches.
1 inch = 25.4 mm