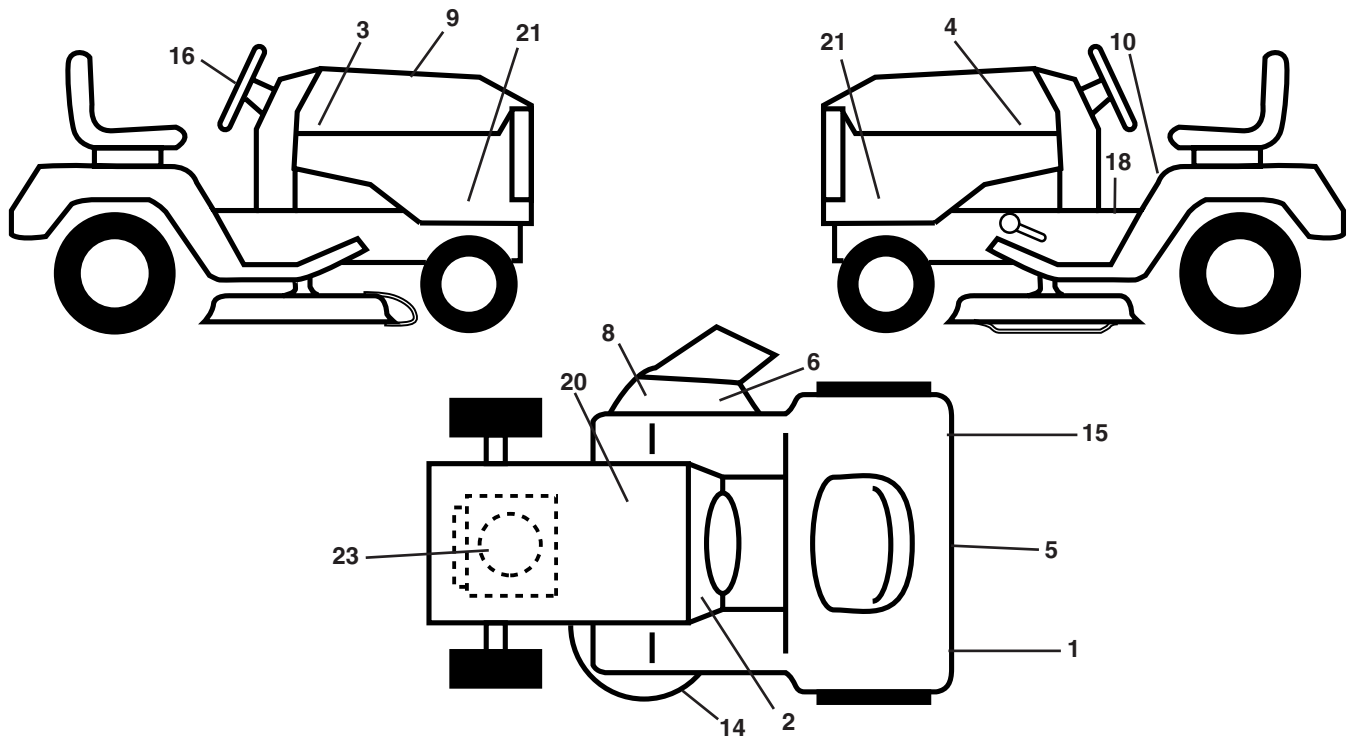


TRACTOR - - MODEL NUMBER BB24H42YT (96012003500)

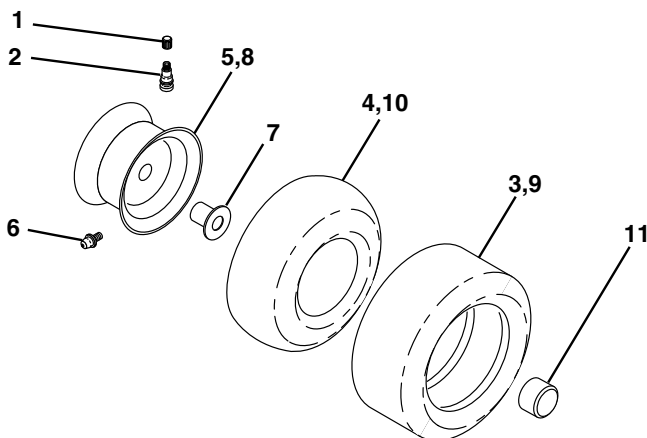
DECALS



| KEY NO. | PART NO. | DESCRIPTION |
|---------|----------|-------------------------------|
| 1 | 187407 | Reflector, LH |
| 2 | 194606 | Decal Dash |
| 3 | 176272 | Decal Hood Rh |
| 4 | 176273 | Decal Hood LH |
| 5 | 172740 | Decal Fender Logo |
| 6 | 170563 | Decal Warning, Keep Hand Away |
| 8 | 179128 | Decal Deck "B" 42" |
| 9 | 195525 | Decal Replacement Hood |
| 10 | 157140 | Decal Fender Danger |
| 14 | 160396 | Decal V-Belt Schematic |
| 15 | 187408 | Decal Reflector, RH |

| KEY NO. | PART NO. | DESCRIPTION |
|---------|------------|------------------------|
| 16 | 172743 | Decal Ins Strg Whl |
| 18 | 193939 | Decal Oper |
| 20 | 145005 | Decal Battery |
| 21 | 195676 | Decal Side Panel Logo |
| 23 | 191652 | Decal Engine |
| -- | 138311 | Decal Height Adjust |
| -- | 166960 | Decal By Pass Lt Hydro |
| -- | 184310X428 | Pad Footrest LH |
| -- | 184311X428 | Pad Footrest RH |
| -- | 196085 | Manual Operator's E&F |

WHEELS AND TIRES

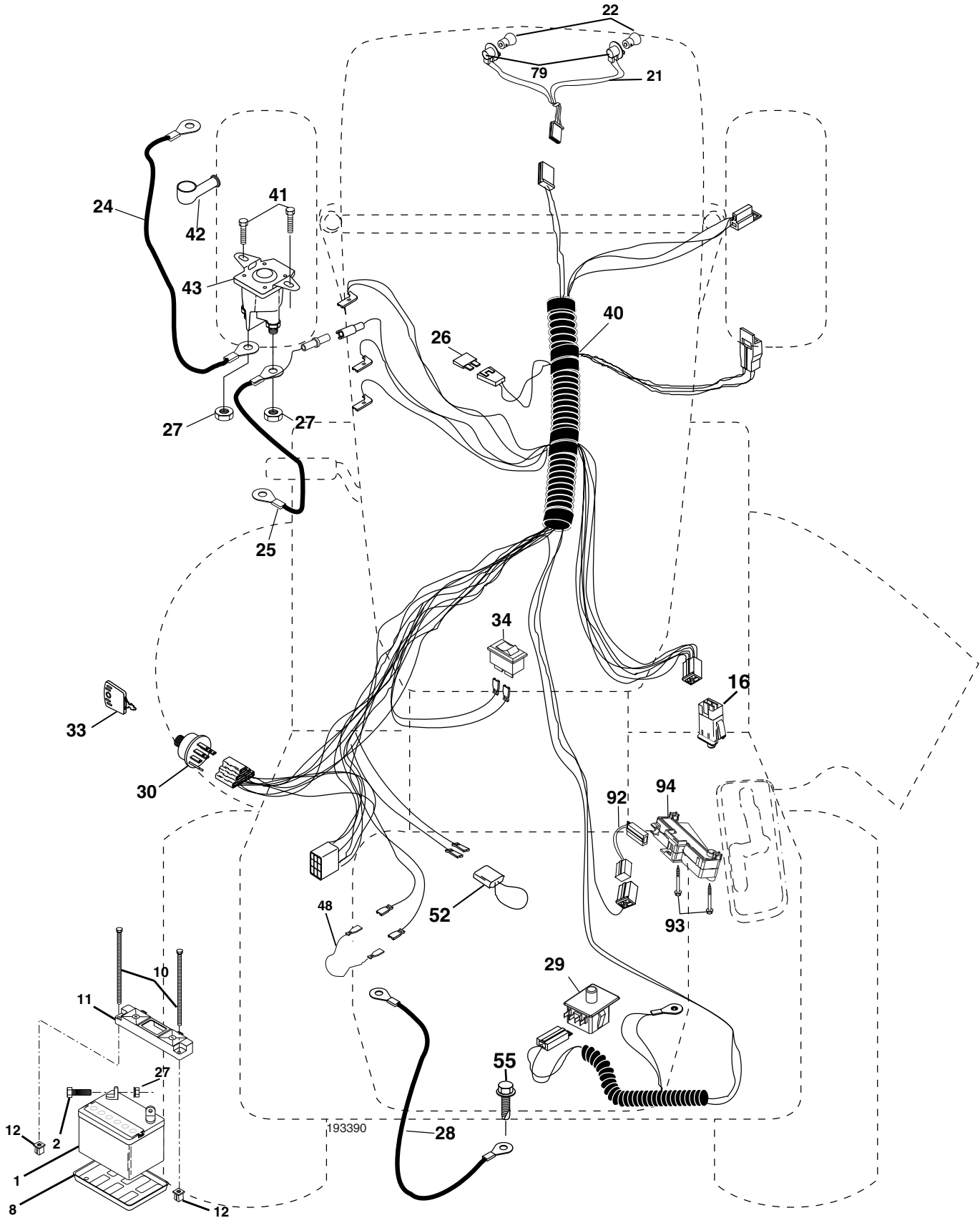


| KEY NO. | PART NO. | DESCRIPTION |
|---------|------------|-----------------------------------|
| 1 | 59192 | Cap Valve Tire |
| 2 | 65139 | Stem Valve |
| 3 | 106222X | Tire F T 15 x 6 0 - 6 Service |
| 4 | 59904 | Tube Front (Service Item Only) |
| 5 | 106732X421 | Rim Asm 6" Front Service |
| 6 | 278H | Fitting Grease (Front Wheel Only) |
| 7 | 9040H | Bearing Flange (Front Wheel nly) |
| 8 | 106108X421 | Rim Asm 8" Rear Service |
| 9 | 138468 | Tire R T 20 x 8-8 Service |
| 10 | 7152J | Tube Rear (Service Item Only) |
| 11 | 104757X421 | Cap Axle Blk 1 50 x 1 00 |
| -- | 144334 | Sealant, Tire (10 oz. Tube) |

NOTE: All component dimensions given in U.S. inches
1 inch = 25.4 mm

TRACTOR - - MODEL NUMBER BB24H42YT (96012003500)

ELECTRICAL



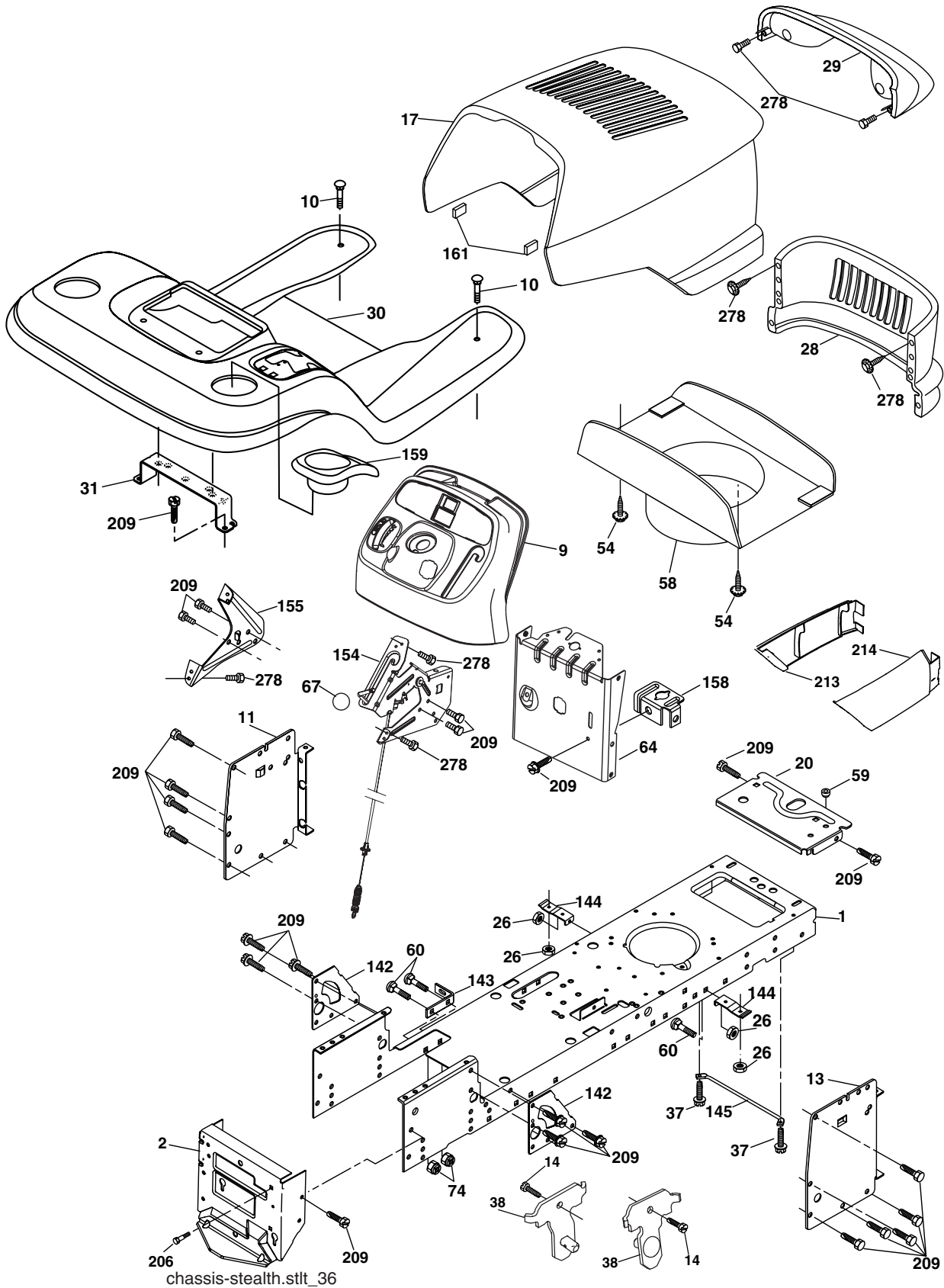
TRACTOR - - MODEL NUMBER BB24H42YT (96012003500)
ELECTRICAL

| KEY NO. | PART NO. | DESCRIPTION |
|----------------|-----------------|-----------------------------------|
| 1 | 144927 | Battery |
| 2 | 74760412 | Bolt Hex Hd 1/4-20 unc x 3/4 |
| 8 | 7603J | Tray Battery |
| 10 | 145211 | Bolt Battery Front 1/4-20 x 7.5 |
| 11 | 150109 | Holddown Battery |
| 12 | 145769 | Nut Push Nylon 1/4 |
| 16 | 176138 | Switch Interlock |
| 21 | 175688 | Harness Socket Light |
| 22 | 4152J | Bulb, Light # 1156 |
| 24 | 8860R | Cable Battery |
| 25 | 146148 | Cable Battery 6 Ga. Red w/16 wire |
| 26 | 175158 | Fuse |
| 27 | 73510400 | Nut Keps Hex 1/4-20 unc |
| 28 | 145491 | Cable Ground 21" Blk 6 Ga. |
| 29 | 192749 | Switch Seat |
| 30 | 193350 | Switch Ign |
| 33 | 140401 | Key Ign Molded Generic |
| 34 | 110712X | Switch Light/Reset |
| 40 | 193390 | Harness Ign |
| 41 | 17720408 | Bolt Fin Hex 1/4-20 unc x 1/2 |
| 42 | 131563 | Cover Terminal Red |
| 43 | 178861 | Solenoid |
| 48 | 140844 | Adapter Ameter |
| 52 | 141940 | Protection Loop |
| 55 | 17490508 | Screw Thdrol 5/16-18 x 1/2 |
| 79 | 175242 | Socket Asm Bulb Twistlock |
| 92 | 193465 | Harness Pigtail Reverse Switch |
| 93 | 192540 | Screw Plastite 10-14 x 2.0 |
| 94 | 191834 | Module Revers ROS |

NOTE: All component dimensions given in U.S. inches
1 inch = 25.4 mm

TRACTOR - - MODEL NUMBER BB24H42YT (96012003500)

CHASSIS



TRACTOR - - MODEL NUMBER BB24H42YT (96012003500)

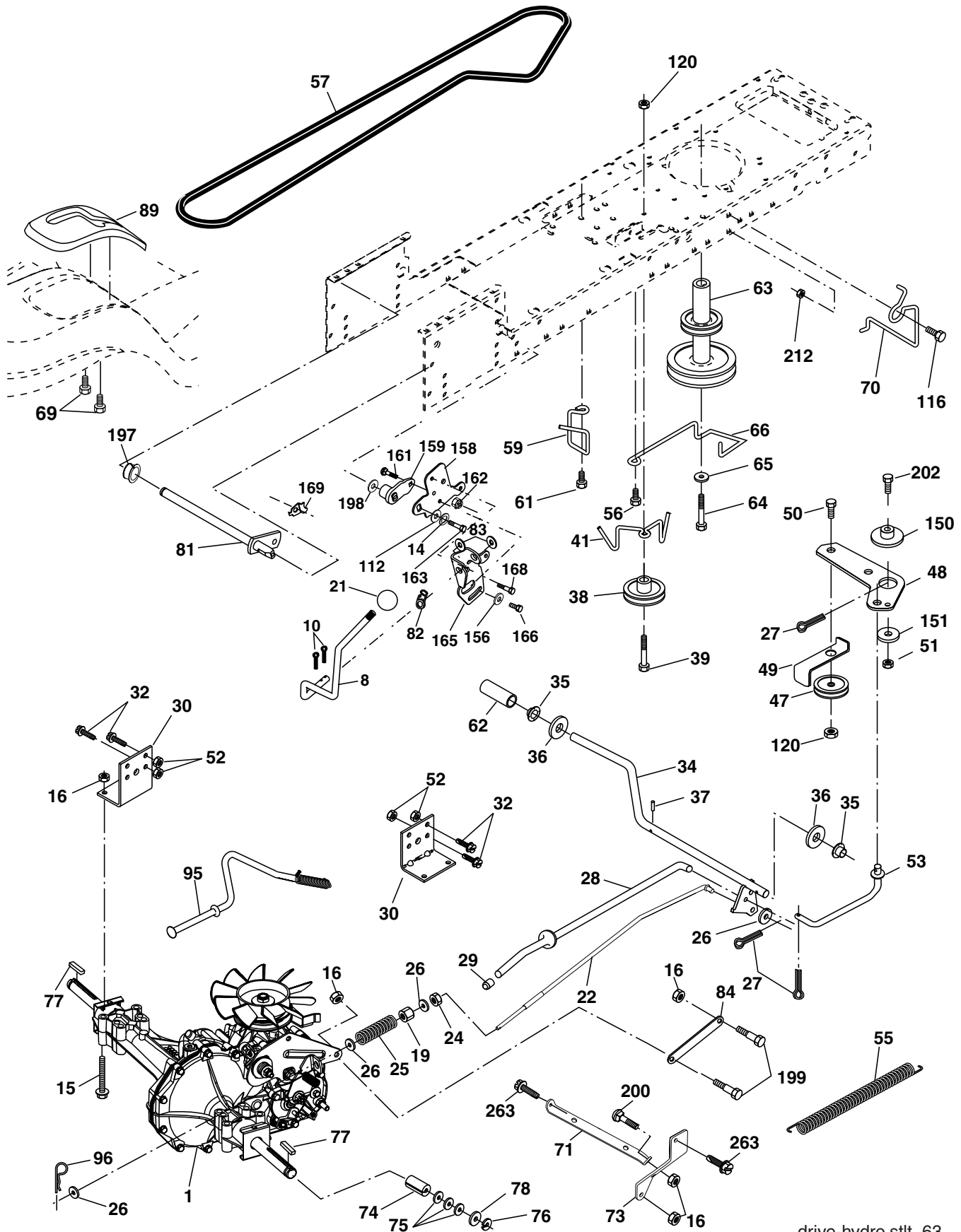
CHASSIS

| KEY NO. | PART NO. | DESCRIPTION |
|---------|------------|---------------------------------|
| 1 | 174619 | Chassis |
| 2 | 176554 | Drawbar |
| 9 | 193611X428 | Dash |
| 10 | 72140608 | Bolt Carriage 3/8-16 x 1 |
| 11 | 167203 | Panel Dash Lh |
| 13 | 178298 | Panel Dash Rh |
| 14 | 17490608 | Screw Thdrol 3/8-16 x 1/2 |
| 17 | 175260X428 | Hood |
| 20 | 162026 | Plate Battery |
| 26 | 73800600 | Nut Lock Hex W/Ins 3/8-16 unc |
| 28 | 175289X428 | Grille |
| 29 | 161840 | Lens Bar |
| 30 | 192393X428 | Fender Footrest |
| 31 | 139976 | Bracket Fender |
| 37 | 17490508 | Screw Thdrol 6/16-18 x 1/2 TYT |
| 38 | 175710 | Bracket Asm Pivot Mower Rear |
| 54 | 192512 | Screw WSHD Hex 10-32 x 5/8 |
| 58 | 175351 | Duct Air |
| 59 | 187495 | Bushing |
| 60 | 72140606 | Bolt RDHD Sqnk 3/8-16 unc x 3/4 |
| 64 | 174997 | Dash Lower STLT |
| 67 | 106932X | Knob |
| 74 | 73680600 | Nut Crownlock 3/8-16 unc |
| 142 | 175702 | Plate Reinforcement STLT |
| 143 | 186689 | Bracket Swaybar Chassis |
| 144 | 175582 | Bracket Footrest Step-thru |
| 145 | 156524 | Rod Pivot Chassis/Hood |
| 154 | 192413 | Bracket Clutch Asm |
| 155 | 161900 | Bracket Dash LH |
| 158 | 162037 | Bracket Parking Brake |
| 159 | 155123X428 | Cupholder |
| 161 | 164655 | Bumper Hood |
| 206 | 170165 | Bolt Shoulder 5/16-18 |
| 209 | 17000612 | Screw Hexwsh Thdr 3/8-16 x 3/4 |
| 213 | 169848X428 | Skirt Grille LH |
| 214 | 169847X428 | Skirt Grille RH |
| 278 | 191611 | Screw 10 x 3/4 Single Lead-Hex |

NOTE: All component dimensions given in U.S. inches
1 inch = 25.4 mm

TRACTOR -- MODEL NUMBER BB24H42YT (96012003500)

DRIVE



drive-hydro.stlt_63

TRACTOR - - MODEL NUMBER BB24H42YT (96012003500)

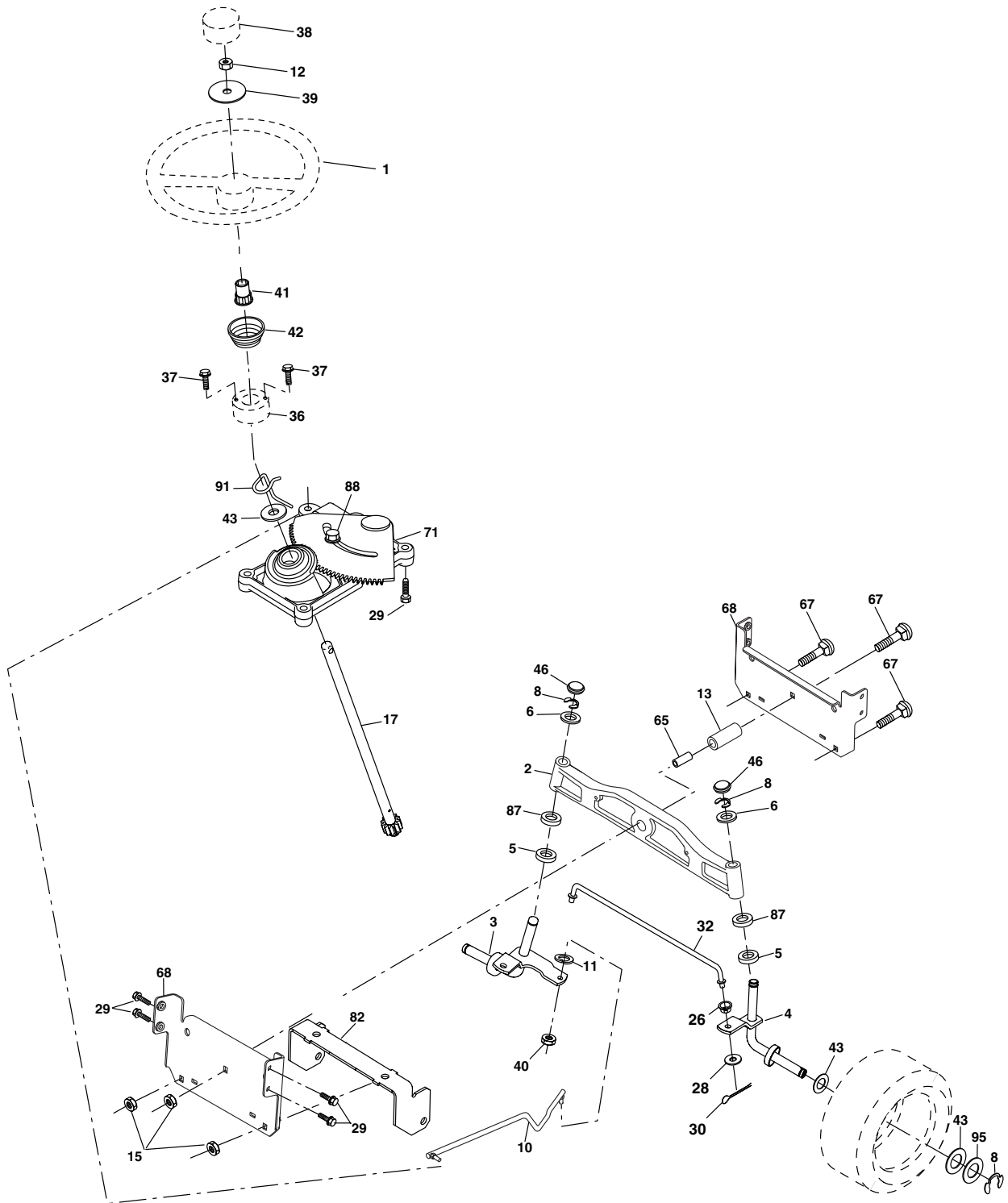
DRIVE

| KEY NO. | PART NO. | DESCRIPTION | KEY NO. | PART NO. | DESCRIPTION |
|---------|----------|--|---------|------------|-----------------------------------|
| 1 | ----- | Transaxle Hydro Gear 314-0510 (Order Parts From Transaxle Manufacturer) | 66 | 154778 | Keeper Belt Engine |
| 8 | 192502 | Rod Shift | 69 | 142432 | Screw Hex Wsh Hi-Lo 1/4 x 1/2 unc |
| 10 | 76020416 | Pin Cotter 1/8 x 1 CAD | 70 | 134683 | Guide Bolt Mower drive RH |
| 14 | 10040400 | Washer Lock Hvy Helical | 71 | 169183 | Strap Torque Lh Hydro |
| 15 | 74490544 | Bolt, Hex FLGHD 5/16-18 Gr. 5 | 73 | 169182 | Strap Torque Rh Hydro |
| 16 | 73800500 | Nut Lock Hex W/Ins 5/16-18 unc | 74 | 137057 | Spacer, Axle |
| 19 | 73800600 | Nut Lock Hex W/Wsh 3/8-16 unc | 75 | 121749X | Washer 25/32 x 1-1/4 x 16 Ga. |
| 21 | 106933X | Knob | 76 | 12000001 | E-Ring |
| 22 | 169498 | Rod, Brake Hydro | 77 | 123583X | Key, Square |
| 24 | 73350600 | Nut | 78 | 121748X | Washer 25/32 x 1-5/8 x 16 Ga. |
| 25 | 106888X | Spring, Brake Rod | 81 | 165596 | Shaft Asm. Cross Hydro |
| 26 | 19131316 | Washer | 82 | 165711 | Spring Torsion T/A |
| 27 | 76020412 | Pin Cotter 1/8 x 3/4 CAD. | 83 | 19171216 | Washer 17/32 x 3/4 x 16 Ga. |
| 28 | 175765 | Rod, Parking Brake | 84 | 169594 | Link Transaxle |
| 29 | 71673 | Cap, Parking Brake | 89 | 192387X428 | Console, Shift |
| 30 | 169592 | Bracket, Transaxle | 95 | 170201 | Control Asm Bypass Hydro |
| 32 | 74760512 | Bolt Hex Hd 5/16-18 unc x 3/4 | 96 | 4497H | Retainer Spring 1" Zinc/Cad |
| 34 | 175578 | Shaft, Foot Pedal | 112 | 19091210 | Washer 9/32 x 3/4 x 10 Ga. |
| 35 | 120183X | Bearing, Nylon | 116 | 72140608 | Bolt RDHD SQNK 3/8-16 UNC x 1 |
| 36 | 19211616 | Washer | 120 | 73900600 | Nut Lock Flg 3/8-16 unc |
| 37 | 1572H | Pin, Roll | 150 | 175456 | Spacer Retainer |
| 38 | 179114 | Pulley, Composite | 151 | 19133210 | Washer 13/32 x 2 x 10 Ga. |
| 39 | 72110622 | Bolt Rdhd 3/8-16 unc x 2-3/4 Gr. 5 | 156 | 166002 | Washer Srrted 5/16 ID x 1.125 |
| 41 | 175556 | Keeper, Belt Idler | 158 | 165589 | Bracket Shift Mount |
| 47 | 127783 | Pulley, Idler, V-Groove | 159 | 183900 | Hub Shift |
| 48 | 154407 | Bellcrank Clutch Grnd Drv STL | 161 | 72140406 | Bolt Rdhd Sqnk 1/4-20 x 3/4 Gr. 5 |
| 49 | 123205X | Retainer, Belt | 162 | 73680400 | Nut Crownlock 1/4-20 unc |
| 50 | 72110612 | Bolt Carr Sh 3/8-16 x 1-1/2 Gr. 5 | 163 | 74780416 | Bolt Hex Fin 1/4-20 unc x 1 Gr. 5 |
| 51 | 73680600 | Nut Crownlock 3/8-16 unc | 165 | 165623 | Bracket Pivot Lever |
| 52 | 73680500 | Nut Crownlock 5/16-18 unc | 166 | 17490510 | Screw 5/16-18 x 5/8 |
| 53 | 105710X | Link, Clutch | 168 | 165492 | Bolt Shoulder 5/16-18 x .561 |
| 55 | 105709X | Spring, Return, Clutch | 169 | 165580 | Plate Fastening Lt |
| 56 | 17060620 | Screw 3/8-16 x 1-1/4 | 197 | 169613 | Nyliner Snap-In 5/8" ID |
| 57 | 140294 | V-Belt, Ground Drive | 198 | 169593 | Washer Nyl 7/8 ID x .105 |
| 59 | 169691 | Keeper, Center Span | 199 | 169612 | Bolt Shoulder 5/16-18 unc |
| 61 | 17120614 | Screw 3/8-16 x .875 | 200 | 72140508 | Bolt Rdhd Sqnk 5/16-18 unc x 1 |
| 62 | 123533X | Cover, Pedal | 202 | 72110614 | Bolt Carr Sh 3/8-16 x 1-3/4 Gr. 5 |
| 63 | 175410 | Pulley, Engine | 212 | 145212 | Nut Hex Flange Lock |
| 64 | 173937 | Bolt Hex 7/16-20 x 4 x Gr. 5-1.5 Thr | 263 | 17000612 | Thdrol Screw 3/8-16 x 3/4 |
| 65 | 10040700 | Washer | | | |

NOTE: All component dimensions given in U.S. inches
1 inch = 25.4 mm

TRACTOR - - MODEL NUMBER BB24H42YT (96012003500)

STEERING ASSEMBLY



steering_stealth_prem_13

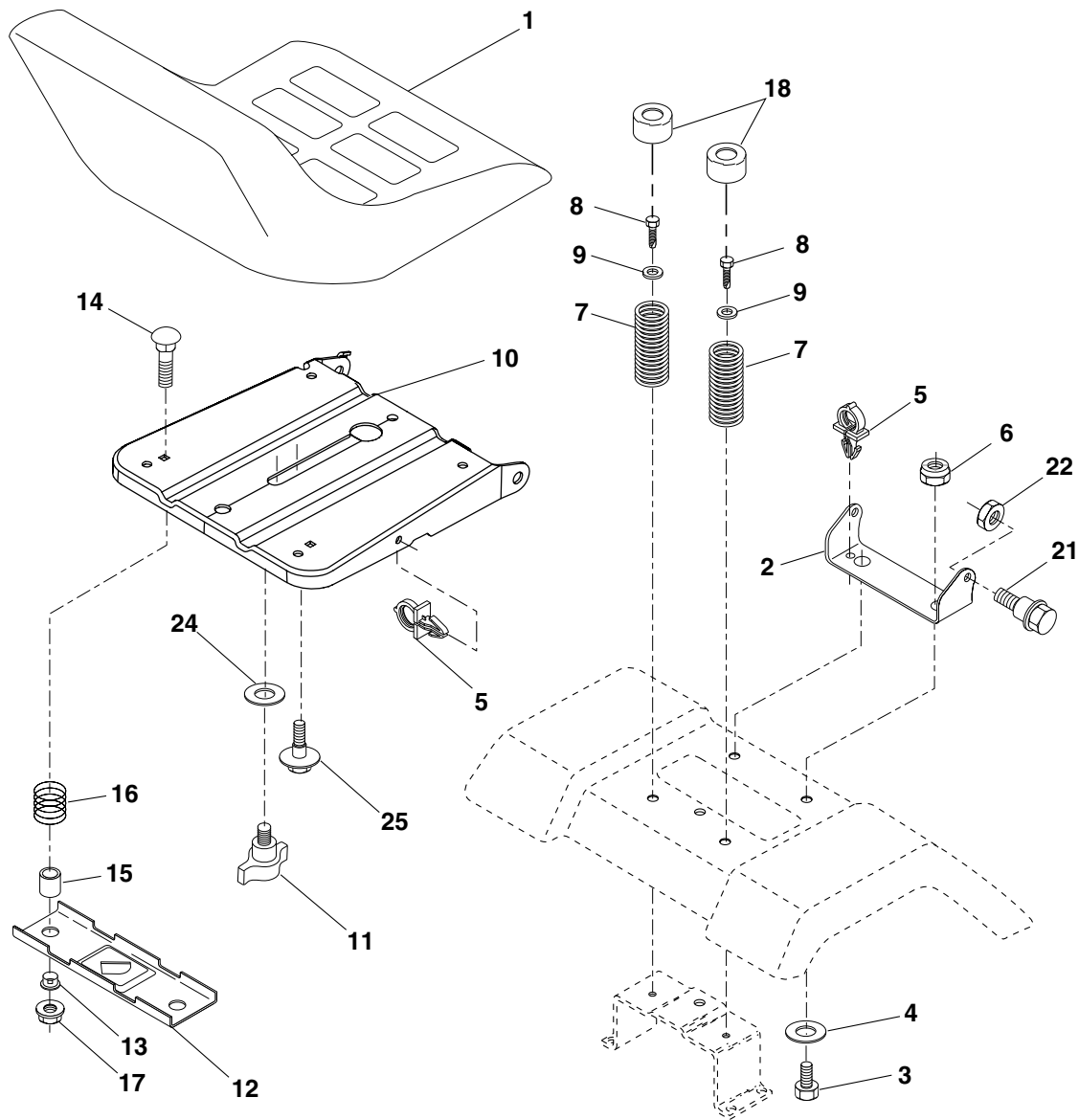
TRACTOR - - MODEL NUMBER BB24H42YT (96012003500)
STEERING ASSEMBLY

| KEY NO. | PART NO. | DESCRIPTION |
|----------------|-----------------|------------------------------------|
| 1 | 186094X428 | Wheel Steering |
| 2 | 184706 | Axle Asm Cast Iron LT |
| 3 | 169840 | Spindle Asm LH |
| 4 | 169839 | Spindle Asm RH |
| 5 | 6266H | Bearing Race Thrust Harden |
| 6 | 121748X | Washer 25/32 x 1-5/8 x 16 Ga. |
| 8 | 12000029 | Ring Klip #t5304-75 |
| 10 | 175121 | Link Drag |
| 11 | 10040600 | Washer Lock Hvy Hlcl Spr 3/8 |
| 12 | 73940800 | Nut Hex Jam Toplock 1/2-20 unf |
| 13 | 136518 | Spacer Brg Axle Front |
| 15 | 145212 | Nut Hex Flange Lock |
| 17 | 177883 | Shaft Asm Steering |
| 26 | 126847X | Bushing Link Drag |
| 28 | 19131416 | Washer 13/32 x 7/8 x 16 Ga. |
| 29 | 17000612 | Screw 3/8-16 x .75 |
| 30 | 76020412 | Pin Cotter 1/8 x 3/4 |
| 32 | 192757 | Rod Tie |
| 36 | 155105 | Bushing Strg |
| 37 | 152927 | Screw |
| 38 | 186095X428 | Insert Cap Strg Wh |
| 39 | 19183812 | Washer 9/16 ID x 2-3/8 OD x 12 Ga. |
| 40 | 73540600 | Crownlock nut |
| 41 | 186737 | Adaptor Wheel Strg |
| 42 | 163888X428 | Boot Steering Dash |
| 43 | 121749X | Washer 25/32 x 1 1/4 x 16 Ga. |
| 46 | 121232X | Cap Spindle Fr Top Blk |
| 65 | 160367 | Spacer Brace Axle |
| 67 | 72110618 | Bolt RDHD SQNK 3/8-16 x 2 1/4 |
| 68 | 169827 | Axle, Brace |
| 71 | 175146 | Steering Asm |
| 82 | 169835 | Bracket Susp Chassis Front |
| 87 | 173966 | Washer Flat .781 x 1-1/2 x .14 |
| 88 | 175118 | Bolt Shoulder 7/16-20 unc |
| 91 | 175553 | Clip Steering |
| 95 | 188967 | Washer Harden .739 x 1.637 x 060 |

NOTE: All component dimensions given in U.S. inches
1 inch = 25.4 mm

TRACTOR - - MODEL NUMBER BB24H42YT (96012003500)

SEAT ASSEMBLY



seat_lt.knob_2

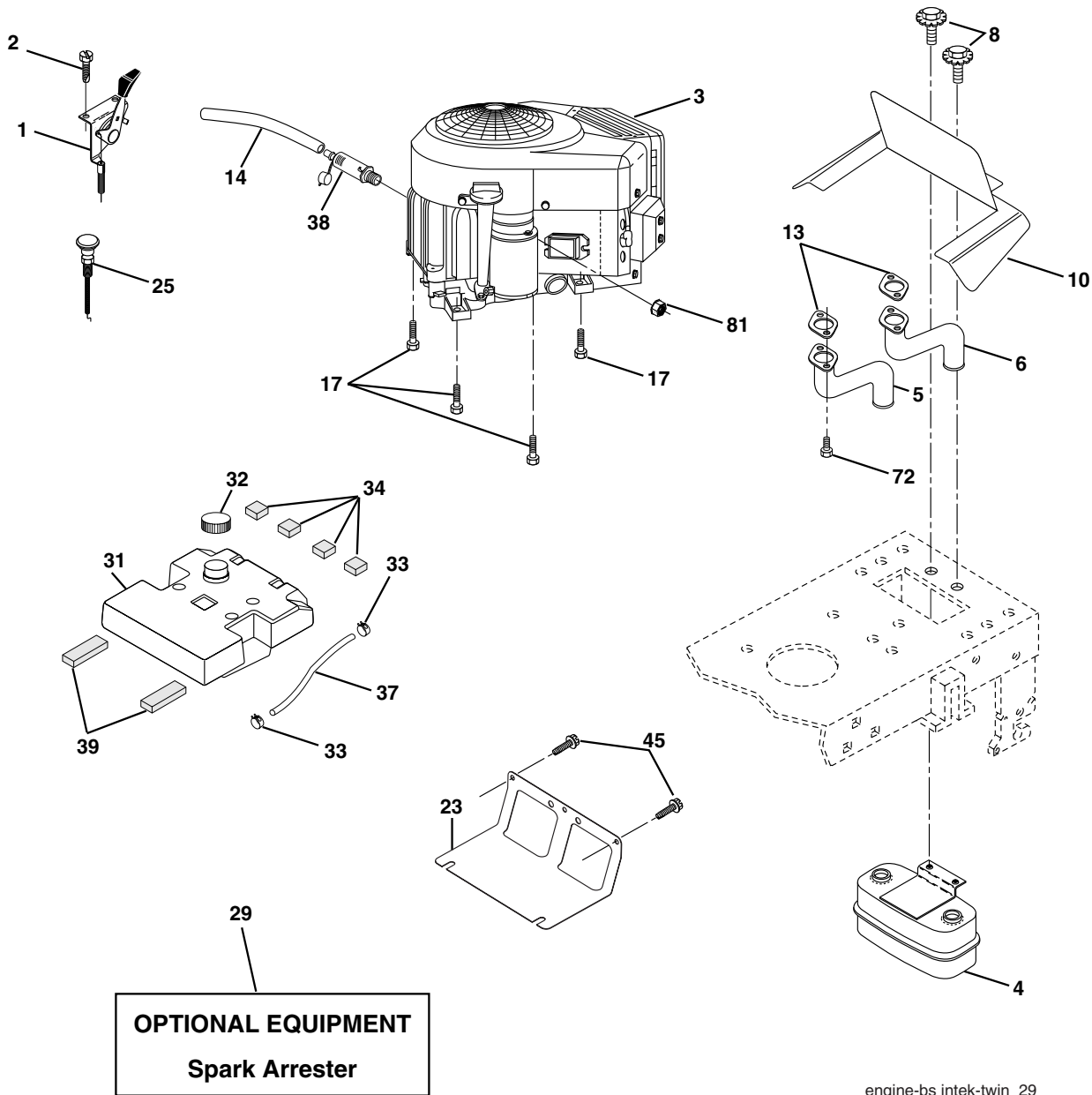
| KEY NO. | PART NO. | DESCRIPTION |
|---------|----------|--------------------------------|
| 1 | 188720 | Seat |
| 2 | 140551 | Bracket Pivot Seat 8 720 |
| 3 | 71110616 | Bolt Fin Hex 3/8-16 unc x 1 |
| 4 | 19131610 | Washer 13/32 x 1 x 10 Ga. |
| 5 | 145006 | Clip Push-In |
| 6 | 73800600 | Nut Hex w/Ins. 3/8-16 unc |
| 7 | 124181X | Spring Seat Cprsn 2 250 Blk Zi |
| 8 | 17000616 | Screw 3/8-16 x 1.5 Smgml |
| 9 | 19131614 | Washer 13/32 x 1 x 14 Ga. |
| 10 | 182493 | Pan Seat |
| 11 | 166369 | Knob Seat |
| 12 | 174648 | Bracket Mounting Switch |

| KEY NO. | PART NO. | DESCRIPTION |
|---------|----------|---------------------------------|
| 13 | 121248X | Bushing Snap Blk Nyl 50 Id |
| 14 | 72050412 | Bolt Rdhd Sqnk 1/4-20 x 1-1/2 |
| 15 | 134300 | Spacer Split 28 x 96 |
| 16 | 121250X | Spring Cprsn |
| 17 | 123976X | Nut Lock 1/4 Lge Flg Gr. 5 Zinc |
| 18 | 124238X | Cap Spring Seat |
| 21 | 171852 | Bolt Shoulder 5/16-18 unc |
| 22 | 73800500 | Nut Hex Lock W/Ins 5/16-18 |
| 24 | 19171912 | Washer 17/32 x 1-3/16 x 12 Ga. |
| 25 | 127018X | Bolt Shoulder 5/16-18 x 62 |

NOTE: All component dimensions given in U.S. inches
1 inch = 25.4 mm

TRACTOR - - MODEL NUMBER BB24H42YT (96012003500)

ENGINE



engine-bs intek-twin_29

| KEY NO. | PART NO. | DESCRIPTION |
|---------|------------|--|
| 1 | 175437X428 | Control, Throttle/Choke |
| 2 | 191611 | Screw Hex Single Lead 10 x 3/4 |
| 3 | ----- | Engine Briggs Model 445677 (Order Parts from Engine Mfg.) |
| 4 | 149723 | Muffler |
| 5 | 159955 | Tube Exhaust LH |
| 6 | 160589 | Tube Exhaust RH |
| 8 | 171877 | Bolt 5/16-18 unc x 3/4 w/Sems |
| 10 | 162797 | Shield Browning |
| 13 | 165391 | Muffler Gasket |
| 14 | 148456 | Tube Oil Drain |
| 17 | 17060624 | Screw 3/8-16 x 1-1/2 |
| 23 | 169837 | Shield, Browning/Debris Guard |
| 25 | 187767X428 | Control Choke |
| 29 | 137180 | Arrester, Spark |
| 31 | 157103 | Tank, Fuel |
| 32 | 161696 | Cap Gauge, Fuel |
| 33 | 123487X | Clamp, Hose Blk |

| KEY NO. | PART NO. | DESCRIPTION |
|---------|----------|-----------------------------------|
| 34 | 106082X | Pad Spacer 1x1x1 |
| 37 | 8543R | Line, Fuel |
| 38 | 181654 | Plug Drain Oil Easy |
| 39 | 109227X | Pad Idler 1.75 x .75 x .06 |
| 45 | 17000612 | Screw Hex Wsh Thdrol 3/8-16 x 3/4 |
| 72 | 183906 | Screw 5/16-18 x 1 |
| 81 | 73510400 | Nut Keps Hex 1/4-20 unc |

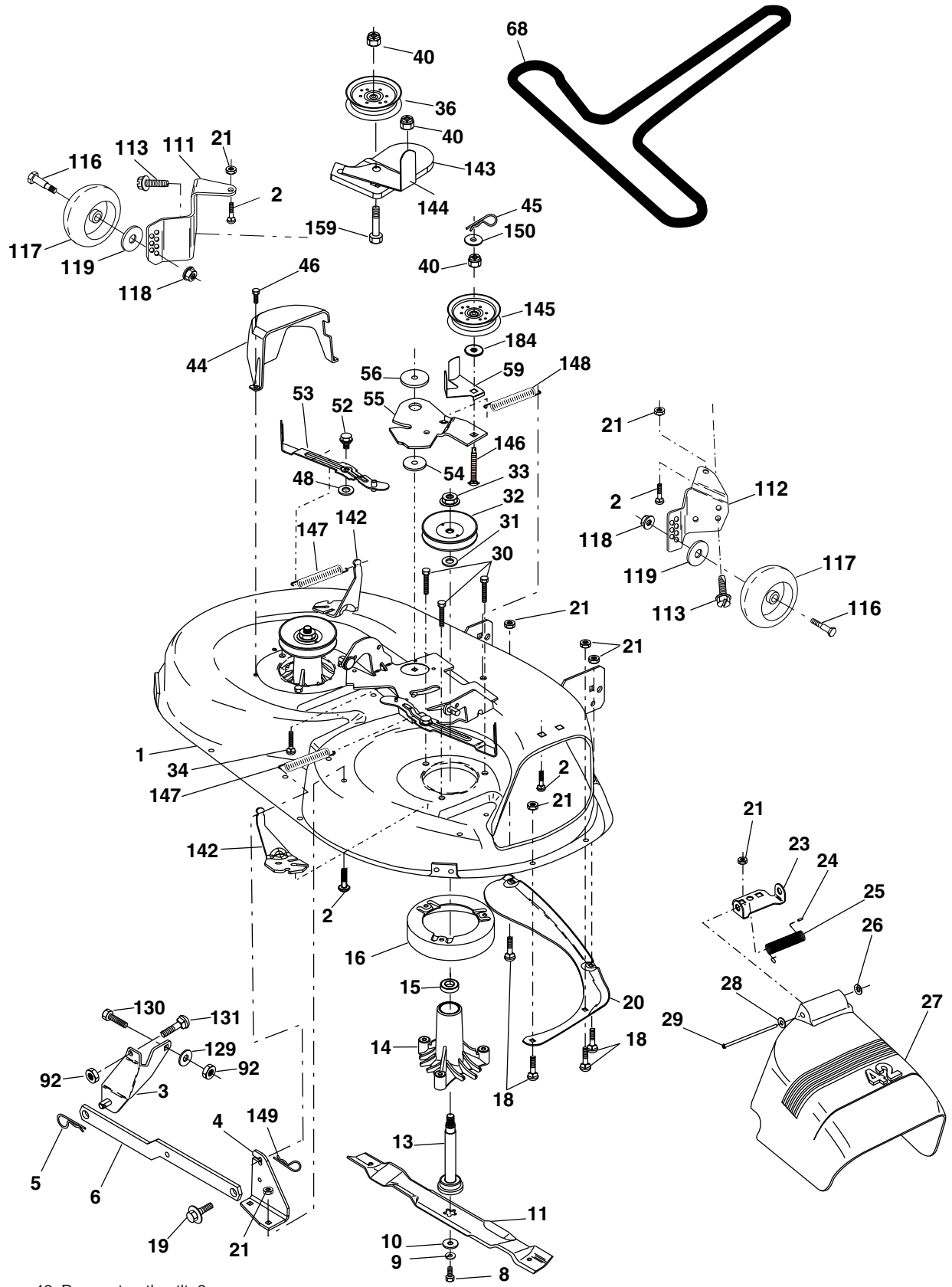
NOTE: All component dimensions given in U.S. inches
1 inch = 25.4 mm

For engine service and replacement parts, call the toll free number for your engine manufacturer listed below:

| | |
|-------------------|----------------|
| Briggs & Stratton | 1-800-233-3723 |
| Kohler Co. | 1-800-544-2444 |
| Tecumseh Products | 1-800-558-5402 |
| Honda Engines | 1-800-426-7701 |
| Kawasaki | 1-949-460-5688 |

TRACTOR - - MODEL NUMBER BB24H42YT (96012003500)

MOWER DECK



42_D_man-t-path_stlt_3

TRACTOR - - MODEL NUMBER BB24H42YT (96012003500)

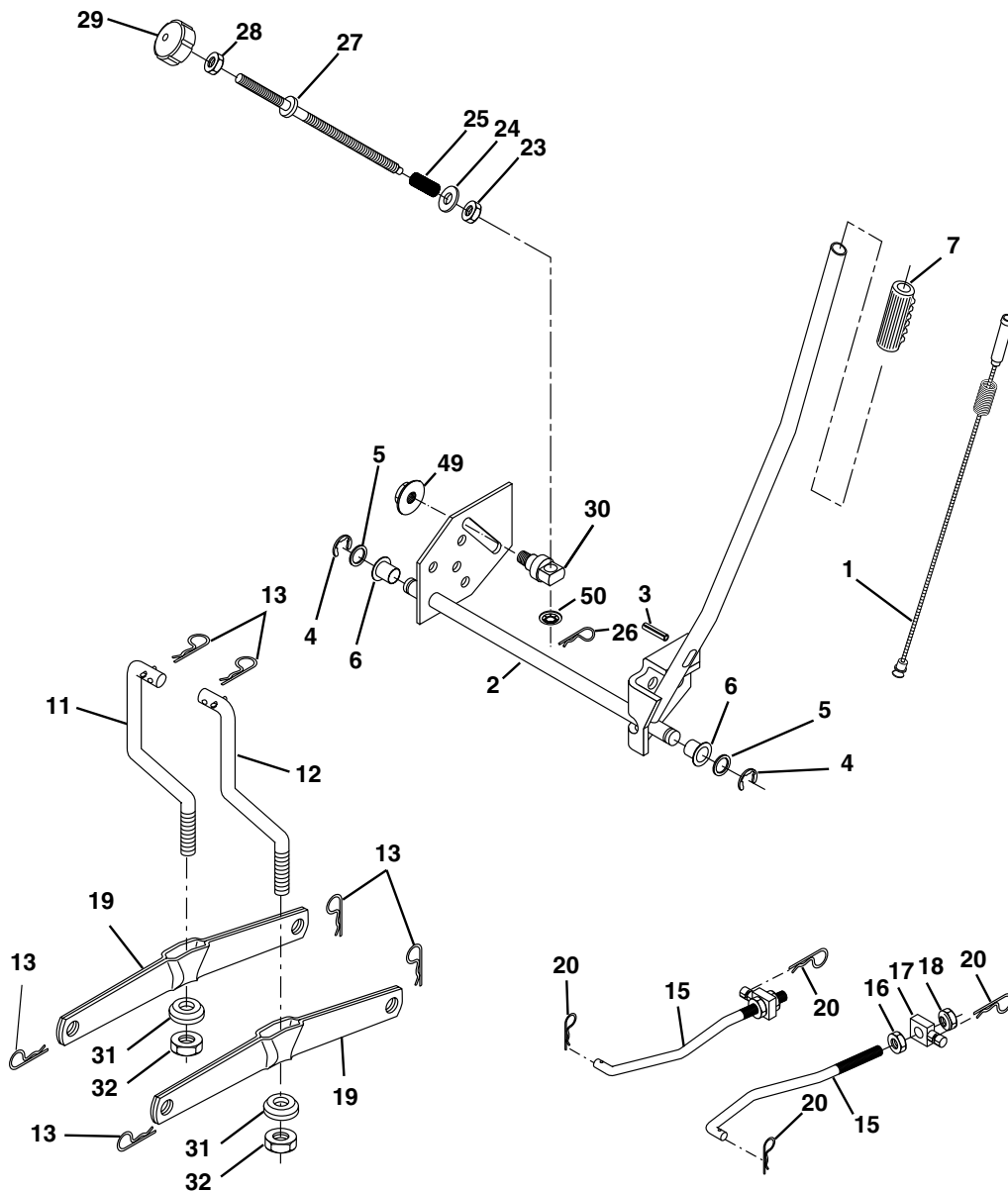
MOWER DECK

| KEY NO. | PART NO. | DESCRIPTION | KEY NO. | PART NO. | DESCRIPTION |
|---------|------------|--|---------|----------|--|
| 1 | 165892 | Mower Deck Assembly, 42" | 48 | 133944 | Washer Hardened |
| 2 | 72140506 | Bolt | 52 | 139888 | Bolt Shld 5/16-18 |
| 3 | 138017 | Bracket Asm Fr. Sway Bar 3/42 | 53 | 184907 | fArm Asm Brake |
| 4 | 165460 | Bracket Asm Deck 42" Sway Bar | 54 | 178515 | Washer, Hardened |
| 5 | 4939M | Retainer Spring | 55 | 155046 | Arm, Idler |
| 6 | 178024 | Bar Sway Deck | 56 | 122052X | Spacer, Retainer |
| 8 | 850857 | Bolt 3/8-24 x 1.25 Gr. 8 patched | 59 | 141043 | Guard TUV Idler |
| 9 | 10030600 | Washer, Lock | 68 | 144959 | V-Belt, 42" Mower |
| 10 | 140296 | Washer, Hardened | 92 | 73800600 | Nut Lock W/Ins 3/8-16 UNC |
| | | (The following Blades are available) | 111 | 179292 | Bracket Whl Ga. LH |
| 11 | 138971 | Blade Mower 42" Hi-Lift (for bagging and discharging) | 112 | 179293 | Bracket Whl Ga. RH |
| -- | 134149 | Blade, Mulching 42" Std (for mulching mowers only) | 113 | 17000510 | Screw 5/16-18 |
| -- | 139775 | Blade Mulching 42" Premium (For better wear when mulching) | 116 | 4898H | Bolt, Shoulder |
| | | | 117 | 188606 | Wheel, Gauge |
| 13 | 137645 | Shaft Assembly, Mandrel, Vented | 118 | 73930600 | Nut Centerlock 3/8-16 |
| 14 | 128774 | Housing, Mandrel, Vented | 119 | 19121414 | Washer 3/8 x 7/8 x 14 Ga. |
| 15 | 110485X | Bearing, Ball, Mandrel | 129 | 19131312 | Washer 13/32 x 13/16 x 12 Ga. |
| 16 | 174493 | Stripper, Mandrel Deck | 130 | 74780616 | Bolt Fin HEX 3/8-16 unc x 1 Gr. 5 |
| 18 | 72140505 | Bolt, Carriage 5/16-18 x 5/8 | 131 | 72140608 | Bolt RDHD SQNK 3/8-16 unc x 1 |
| 19 | 132827 | Bolt, Shoulder | 142 | 165890 | Arm Spring Brake Mower |
| 20 | 159770 | Baffle, Vortex | 143 | 157109 | Bracket Arm Idler 42" |
| 21 | 73680500 | Nut | 144 | 173441 | Keeper Belt 42" Clutch Cable |
| 23 | 177563 | Bracket, Deflector Mower 42" | 145 | 173437 | Pulley Idler Flat |
| 24 | 105304X | Cap, Sleeve 80 x 112 Blk Mower | 146 | 173443 | Bolt Carriage Idler |
| 25 | 123713X | Spring, Torsion, Deflector 2 52 | 147 | 131335 | Spring Extention |
| 26 | 110452X | Nut, Push Phos & Oil | 148 | 169022 | Spring Return Idler |
| 27 | 130968X428 | Shield, Deflector 42" Blk | 149 | 165898 | Retainer Spring Yellow |
| 28 | 19111016 | Washer 11/32 x 5/8 x 16 Ga. | 150 | 19091210 | Washer 9/32 x 3/4 x 10 Ga. |
| 29 | 131491 | Rod, Hinge 42" 6 75 W/G | 159 | 72140614 | Bolt Rdhd Sqn 3/8-16 unc x 1-3/4 |
| 30 | 173984 | Screw Thdrol | 184 | 19131410 | Washer 13/32 x 7/8 x 10 Ga. |
| 31 | 187690 | Washer, Spacer Mower Vented | -- | 130794 | Mandrel Assembly (Includes Housing Shaft and Shaft Hardware Only - Pulley Not Included) |
| 32 | 173436 | Pulley, Mandrel | -- | 172559 | Replacement Mower, Complete (Std. deck Order separately gauge wheel componants Key Nos. 116-119) |
| 33 | 178342 | Nut, Toplock | | | |
| 34 | 72110612 | Bolt Carr SH 3/8-16 x 1-1/2 Gr.5 | | | |
| 36 | 173438 | Pulley, Idler, Flat | | | |
| 40 | 73900600 | Nut Lock 3/8-16 | | | |
| 44 | 140088 | Guard, Mandrel, LH | | | |
| 45 | 4497H | Retainer | | | |
| 46 | 137729 | Screw, Thdrol 1/4-20 x 5/8 T | | | |

NOTE: All component dimensions given in U.S. inches
1 inch = 25.4 mm

TRACTOR - - MODEL NUMBER BB24H42YT (96012003500)

MOWER LIFT



lift-rh.1pc.stlt_15

| KEY NO. | PART NO. | DESCRIPTION |
|---------|----------|---------------------------|
| 1 | 184432 | Plunger Asm. |
| 2 | 159476 | Shaft Asm Lift RH w/Inf |
| 3 | 188822 | Pin Groove 2" |
| 4 | 12000002 | E Ring #5133-62 |
| 5 | 19211621 | Washer 21/32 x 1 x 21 Ga. |
| 6 | 120183X | Bearing Nylon Blk 629 Id |
| 7 | 175830 | Grip Handle |
| 11 | 139865 | Link Lift LH Fixed Length |
| 12 | 139866 | Link Lift RH Fixed Length |
| 13 | 4939M | Retainer Spring |
| 15 | 173288 | Link Front |
| 16 | 73350800 | Nut Jam Hex 1/2-13 unc |
| 17 | 175689 | Trunnion |
| 18 | 73800800 | Nut Lock W/Wsh 1/2-13 unc |
| 19 | 139868 | Arm Suspension Rear |
| 20 | 163552 | Retainer Spring |

| KEY NO. | PART NO. | DESCRIPTION |
|---------|----------|-----------------------------|
| 23 | 110807X | Nut Special |
| 24 | 19131016 | Washer 13/32 x 5/8 x 16 Ga. |
| 25 | 164024 | Spring Infin. Height |
| 26 | 169484 | Retainer Clip |
| 27 | 164543 | Rod Adjust Lift |
| 28 | 73350600 | Nut Hex Jam 3/8-16 unc |
| 29 | 138057 | Knob Infin. 3/8-16 unc |
| 30 | 150233 | Trunnion Infi. Height |
| 31 | 169865 | Bearing Pvt Lift |
| 32 | 73540600 | Nut Crownlock 3/8 - 24 |
| 49 | 145212 | Nut Hexflange Lock |
| 50 | 110452X | Nut Push |

NOTE: All component dimensions given in U.S. inches
1 inch = 25.4 mm