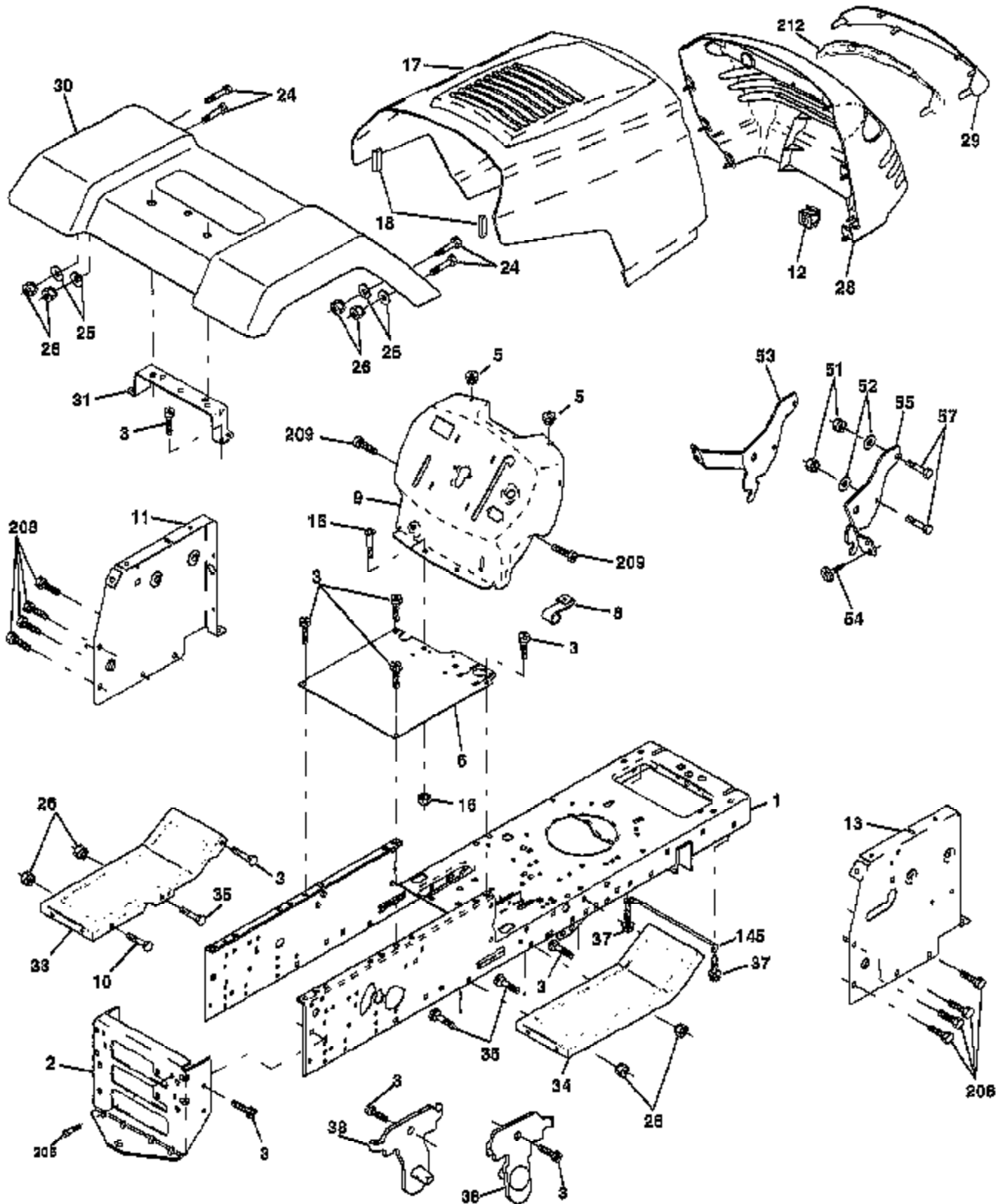


TRACTOR -- MODEL NUMBER 259722

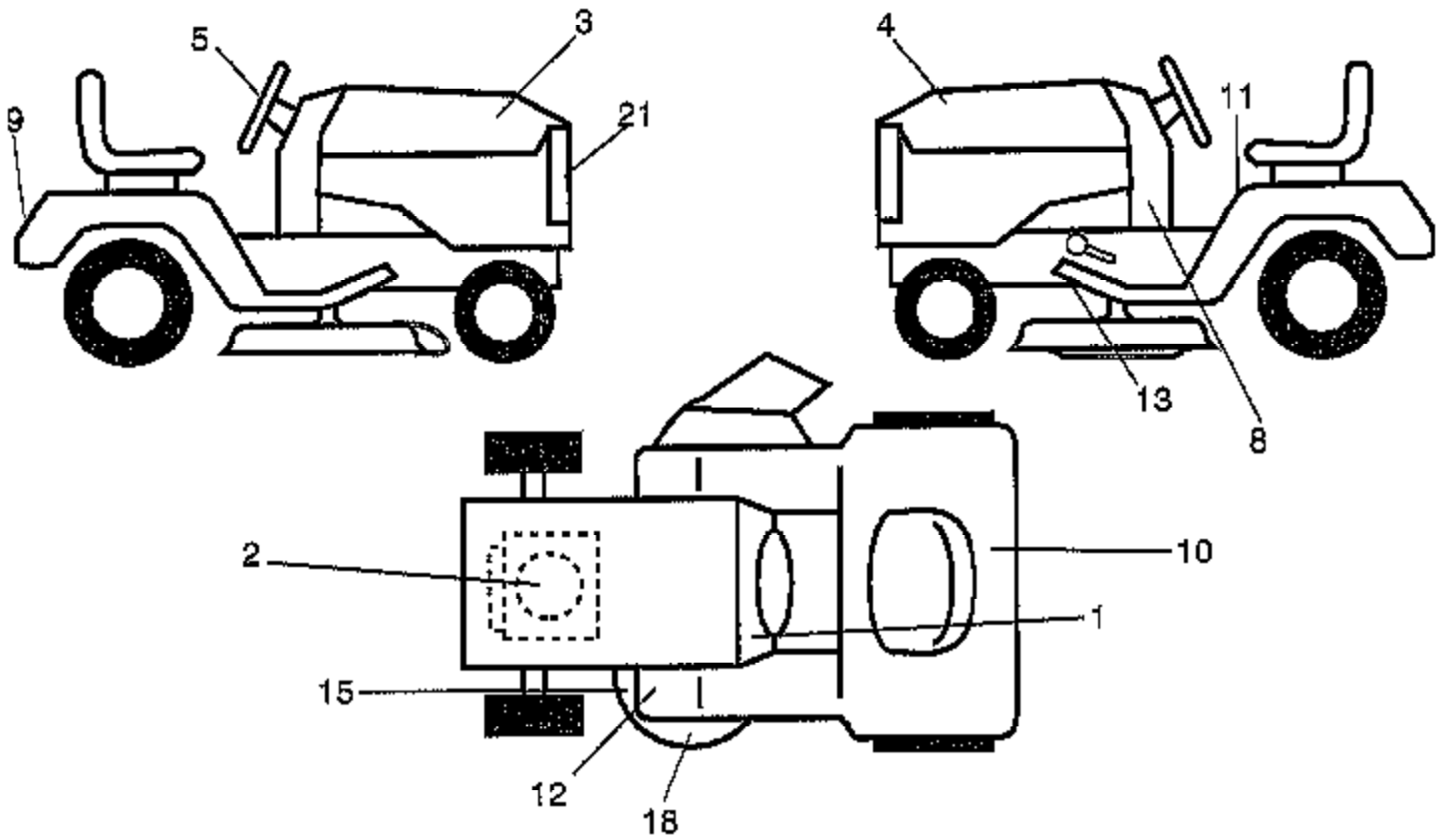
CHASSIS AND ENCLOSURES



| Ref # | Part Number | Qty | Description |
|-------|-------------|-----|---------------------------|
| 1 | 169831 | | CHASSIS |
| 2 | 169061 | | DRAWBAR |
| 3 | 17060612 | | SCREW |
| 5 | 155272 | | BUMPER-HOOD/DASH |
| 6 | 155924X012 | | SADDLE |
| 8 | 155138 | | CLIP.RETAINER |
| 9 | 168347X011 | | DASH |
| 10 | 72140608 | | SUB= 72110608 |
| 11 | 155927 | | "PANEL-DASH,LH" |
| 12 | 145660 | | CLIP.TINNERMAN |
| 13 | 172107X010 | | DASHBOARD |
| 15 | 74180512 | | SCREW |
| 16 | 73510500 | | NUT |
| 17 | 159639X550 | | HOOD.STEEL.ASSY |
| 18 | 126938X | | SUB= 532126938 |
| 24 | 74780616 | | BOLT |
| 25 | 19131312 | | WASHER |
| 26 | 73800600 | | NUT |
| 28 | 157373 | | GRILLE-MS428 |
| 29 | 140273X599 | | LENS.GRILLE.PRIVATE LABEL |
| 30 | 169465X550 | | FENDER |
| 31 | 136619 | | BRKT FENDER |
| 33 | 145476X550 | | FOOTRST PNT. |
| 34 | 145475X550 | | FOOTRST PNT. |
| 35 | 72110606 | | BOLT |
| 37 | 17490508 | | SCREW LT |
| 38 | 169834 | | BRKT ASM PIVOT MOWER REAR |
| 51 | 73800400 | | NUT |
| 52 | 19091416 | | WASHER |
| 53 | 144697 | | BRACKET.GRILLE.LH |
| 54 | 161464 | | SCREW.HEX.WS.HD |
| 55 | 144696 | | BRACKET.GRILLE.RH |
| 57 | 74780412 | | SUB= 74780414 |
| 145 | 156524 | | "ROD POVOT,CHASSIS" |
| 206 | 170165 | | BOLT SHOULDER |
| 208 | 17670608 | | SCREW |
| 209 | 17000612 | | SCREW |
| | 5479J | | PLUG BUTTON T |

TRACTOR – MODEL NUMBER 259722

DECALS

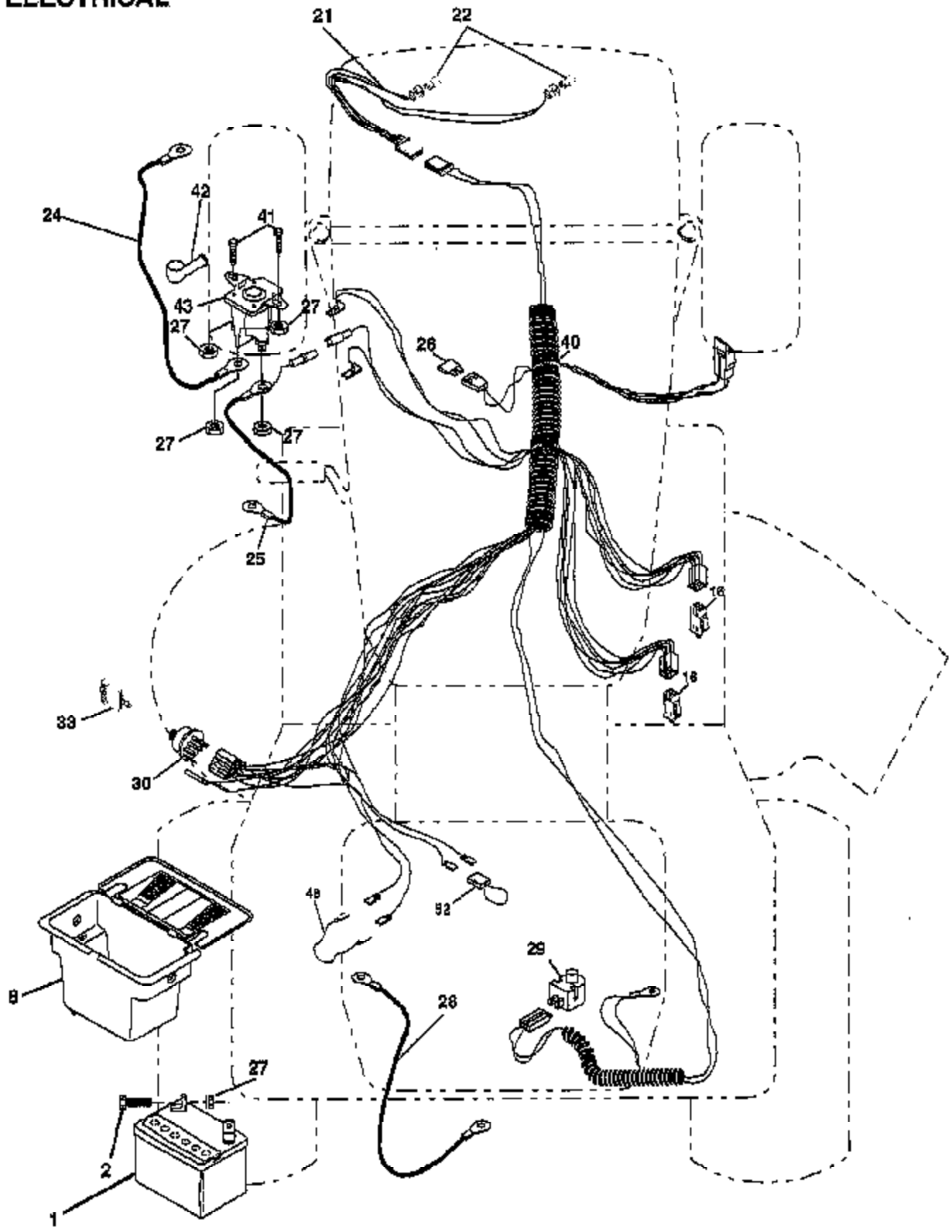


NOTE: All component dimensions given in U. S.
Inches 1 Inch = 25/4 mm

| Ref # | Part Number | Qty | Description |
|-------|-------------|-----|------------------------|
| 1 | 156867 | | "DECAL DASH,OPER." |
| 2 | 64-1726-29 | | DECAL HP ENGINE |
| 3 | 164578 | | DEECAL.HOOD.RH |
| 4 | 164579 | | DECAL.HOOD.LH |
| 5 | 162398 | | DECAL, INS STRG WH |
| 8 | 164424 | | DECAL.PNL.SD |
| 9 | 162395 | | DECAL.FENDER.LOGO |
| 10 | 145005 | | DECAL.BATRY.3-3908 |
| 11 | 156439 | | "DECAL-FENDER,DANG" |
| 12 | 4900J | | DECAL T |
| 15 | 136832 | | DECAL |
| 18 | 163128 | | DECAL.MOWER.HOME |
| 21 | 162392 | | DECAL, GRILLE LENS |
| | 138311 | | DECAL HANDLE LIFT |
| | 173042 | | OWNER'S MANUAL-ENGLISH |
| | 173043 | | OWNER'S MANUAL-SPANISH |

TRACTOR -- MODEL NUMBER 259722

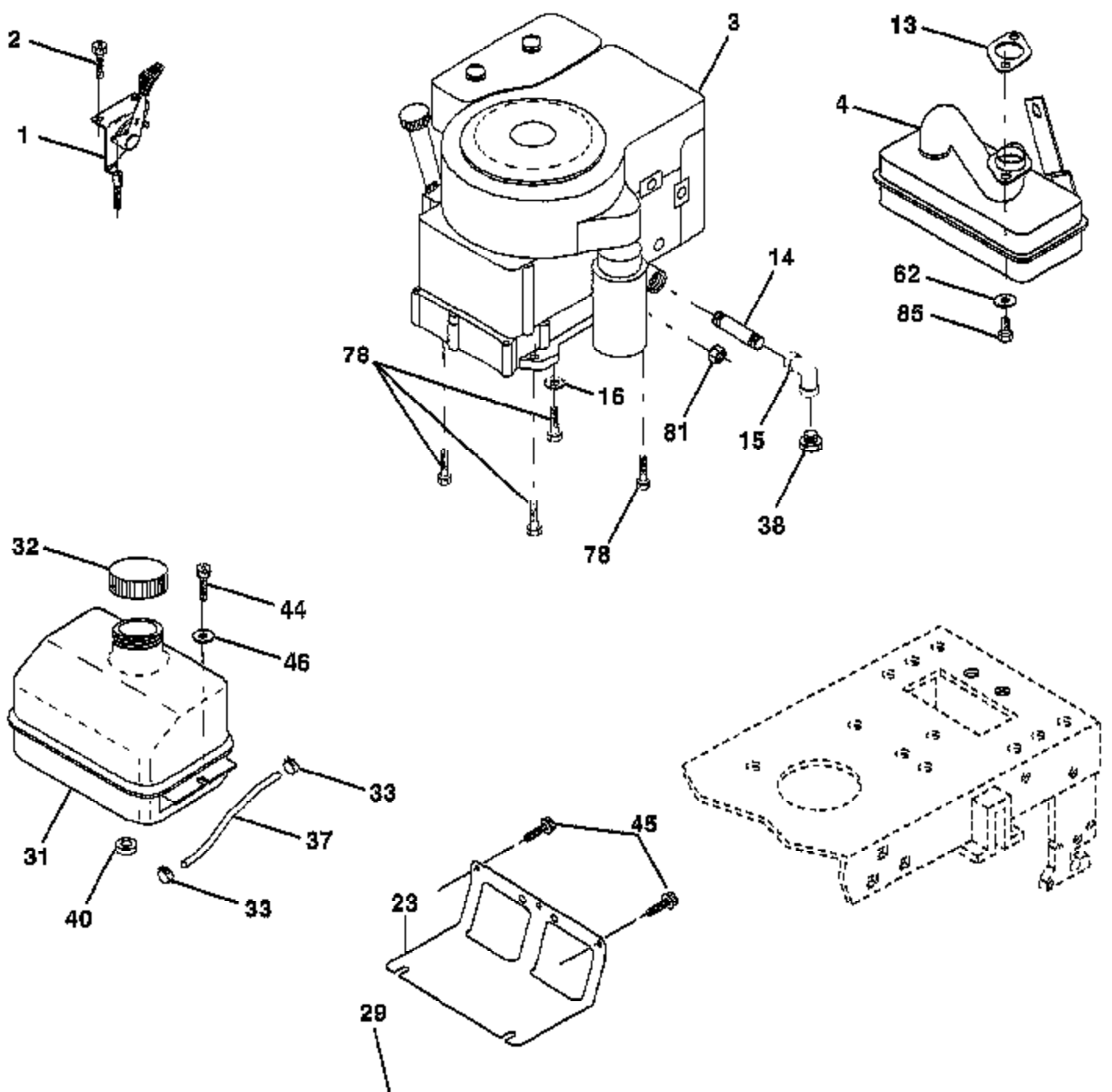
ELECTRICAL



| Ref # | Part Number | Qty | Description |
|-------|-------------|-----|--------------------------|
| 1 | 144925 | | SUB= 123899X |
| 2 | 74760412 | | BOLT LT |
| 8 | 156417 | | "CASE,BATTERY.MECH" |
| 16 | 153664 | | SWITCH INTERLOCK |
| 21 | 166181 | | HARNES.ASM.LIGHT W/4152J |
| 22 | 4152J | | HEADLAMP BULB |
| 24 | 108423X | | CABLE ASM. |
| 25 | 146147 | | CABLE.BTRY.6GA.RD |
| 26 | 166180 | | FUSE.15 AMP |
| 27 | 73510400 | | NUT |
| 28 | 4207J | | CABLE T |
| 29 | 121305X | | SWITCH SEAT |
| 30 | 163968 | | SWITCH.IGN. |
| 33 | 140401 | | KEY MLD GEN DELTA |
| 40 | 170217 | | HARNES IGN |
| 41 | 71110408 | | BOLT HXHD FIN |
| 42 | 131563 | | SUB= 154336 |
| 43 | 145673 | | SUB= 146154 |
| 48 | 140844 | | ADAPTER AMMETER |
| 52 | 141940 | | PROTECTION LOOP |

TRACTOR - MODEL NUMBER 259722

ENGINE

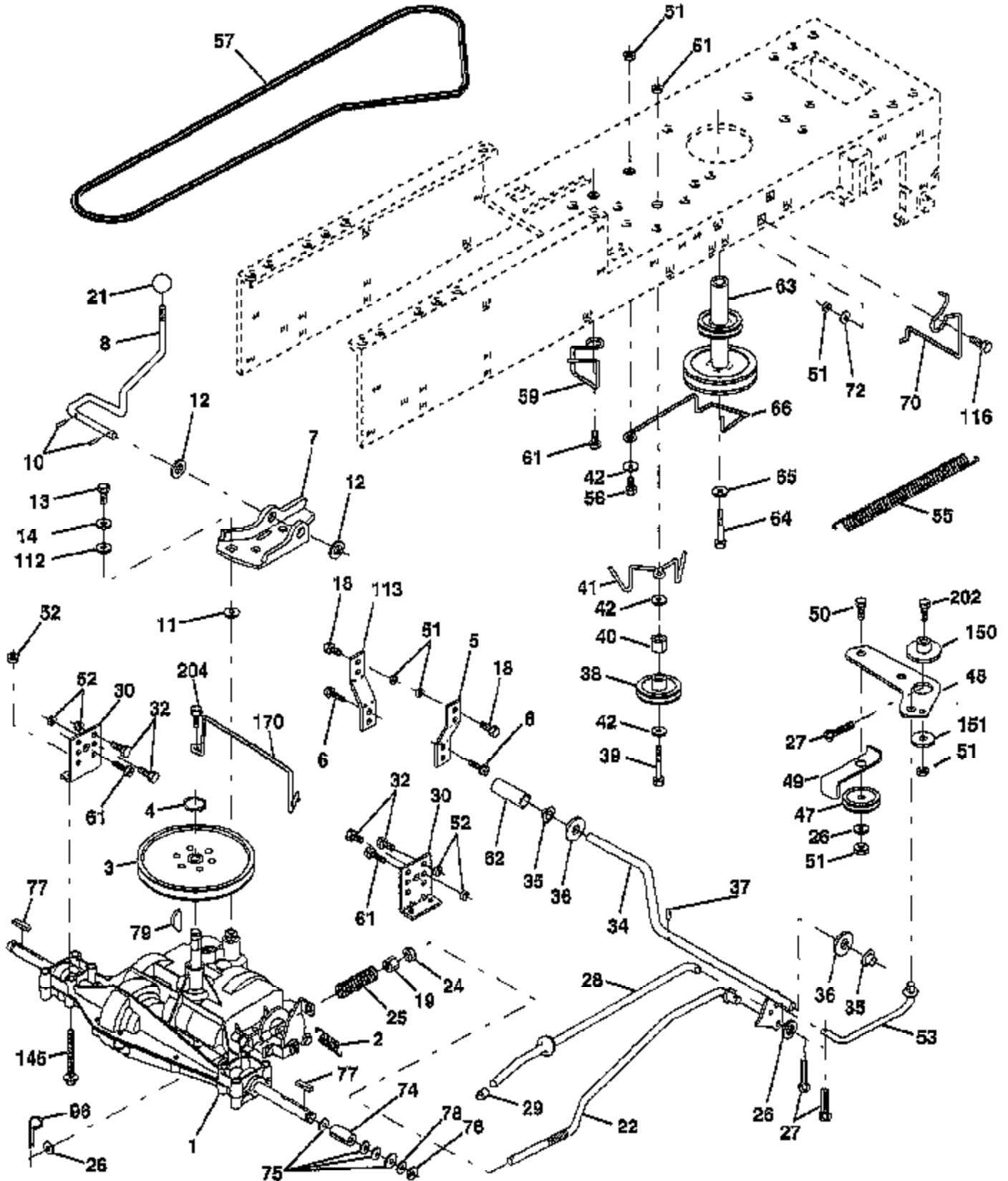


OPTIONAL EQUIPMENT
Spark Arrester

| Ref # | Part Number | Qty | Description |
|-------|-------------|-----|-------------------------|
| 1 | 157626 | | CONTROL-THROT/CHO |
| 2 | 17720410 | | SCREW LT |
| 3 | SUPPLIER | | CHECK WITH SUPPLIER |
| 4 | 156700 | | MUFFLER TEC. 13HP |
| 13 | 165291 | | SUB= 272293 |
| 14 | 13280336 | | PIPE NIPPLE LT |
| 15 | 13200300 | | ELBOW |
| 16 | 11050600 | | LOCKWASHER |
| 23 | 169837 | | SHIELD BROWNING |
| 29 | 137180 | | SUB= 532137180 |
| 31 | 109202X | | TANK.FUEL.LT. |
| 32 | 140527X | | CAP ASM FUEL TOP VENTED |
| 33 | 123487X | | HOSE CLAMP |
| 37 | 137040 | | LINE FUEL |
| 38 | SUPPLIER | | CHECK WITH SUPPLIER |
| 40 | 124028X | | SUB= 532124028 |
| 44 | 17490412 | | SCREW HEX CRT |
| 45 | 17000612 | | SCREW |
| 46 | 19091416 | | WASHER |
| 62 | 10040500 | | LOCKWASHER |
| 72 | 71070512 | | SCREW |
| 78 | 17060620 | | SCREW |
| 81 | 73510400 | | NUT |

TRACTOR--MODEL NUMBER 259722

GROUND DRIVE

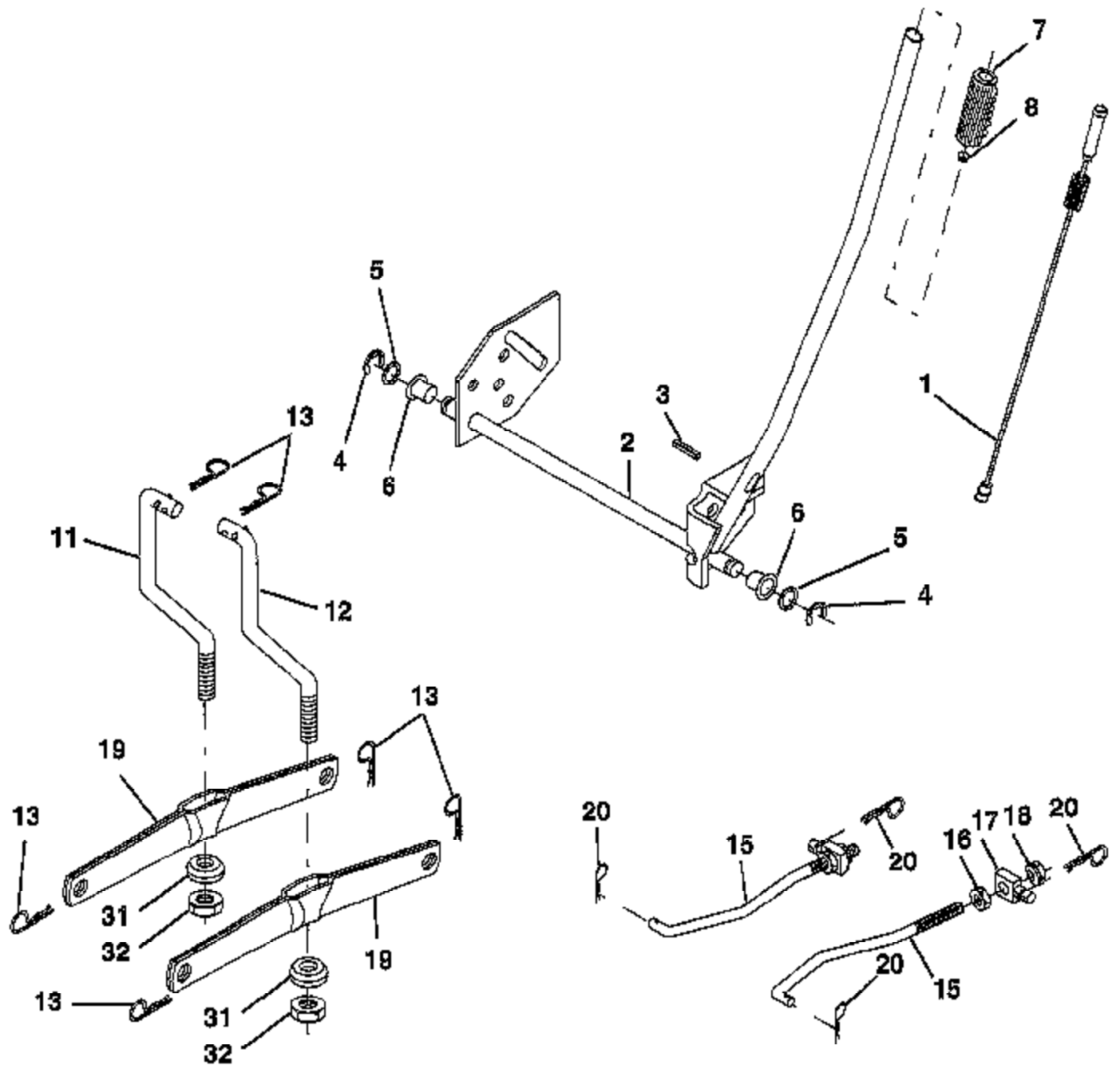


| Ref # | Part Number | Qty | Description |
|-------|-------------|-----|--------------------------|
| 1 | SUPPLIER | | CHECK WITH SUPPLIER |
| 2 | 146682 | | SPRING.BRAKE.RETU |
| 3 | 123666X | | PULLEY TRANS |
| 4 | 12000028 | | SUB= 2267J |
| 5 | 121520X | | STRAP TORQUE |
| 6 | 17060512 | | SCREW |
| 7 | 162240 | | BRKT.SADDLE.SHIFT |
| 8 | 131679 | | SHIFT ROD |
| 10 | 76020416 | | PIN COTTER 1/8 |
| 11 | 105701X | | WASH-SHFT PLT LT |
| 12 | 19151216 | | WASHER |
| 13 | 74550412 | | BOLT.1/4-28.W/PAT |
| 14 | 10040400 | | LOCKWASHER |
| 18 | 74780616 | | BOLT |
| 19 | 73800600 | | NUT |
| 21 | 106933X | | KNOB T (1/2-HOLE) |
| 22 | 130804 | | BRAKE ROD |
| 24 | 73350600 | | NUT |
| 25 | 106888X | | SPRING ROD LT |
| 26 | 19131316 | | WASHER |
| 27 | 76020412 | | COTTER PIN |
| 28 | 145204 | | ROD.BRAKE.PARK.LT |
| 29 | 71673 | | PLUNGER CAP T |
| 30 | 130807 | | TRANSAXLE MTG BKT |
| 32 | 74760512 | | BOLT |
| 34 | 155071 | | SHAFT ASM-PEDAL F |
| 35 | 120183X | | NYLON BEARING |
| 36 | 19211616 | | WASHER LT |
| 37 | 1572H | | SUB= 2882J |
| 38 | 131494 | | FLAT IDLER PULLEY |
| 39 | 72110622 | | BOLT |
| 40 | 4470J | | SPACER T |
| 41 | 165838 | | "KEEPER,BELT.IDLER FLAT" |
| 42 | 19131312 | | WASHER |
| 47 | 127783 | | SUB= 139245 |
| 48 | 154407 | | BELLCRANK.CLUTCH |
| 49 | 123205X | | RETAIN BELT |
| 50 | 74760624 | | SUB= 74930624 |
| 51 | 73680600 | | SUB= 73690600 |
| 52 | 73680500 | | SUB= 73690500 |
| 53 | 105710X | | "LINK, CLUTCH T" |
| 55 | 105709X | | "SPRING, RETURN LT" |
| 56 | 74760620 | | SUB= 74780620 |
| 57 | 130801 | | SUB= 138255 |
| 59 | 169691 | | KEEPER BELT SPAN CTR |
| 61 | 17060612 | | SCREW |
| 62 | 8883R | | PEDAL COVER T |
| 63 | 140186 | | PULLEY.ENGINE |
| 64 | 71170764 | | BOLT |
| 65 | 10040700 | | LOCKWASHER |
| 66 | 154778 | | KEEPER-BELT |
| 70 | 134683 | | KEEPER BELT ENG |
| 72 | 19132012 | | WASHER |
| 74 | 137057 | | SPACER AXLE |
| 75 | 121749X | | WASHER |
| 76 | 12000001 | | E-RING LT |
| 77 | 123583X | | SQUARE KEY |
| 78 | 121748X | | WASHER |

| Ref # | Part Number | Qty | Description |
|-------|-------------|-----|--------------------------|
| 79 | 2228M | | SUB= 2228M1 |
| 96 | 4497H | | RETAINER M |
| 112 | 19091210 | | WASHER LT |
| 113 | 127285X | | "STRAP,TORQUE" |
| 116 | 72110610 | | BOLT RDHD 3/8-16 |
| 145 | 74490540 | | BOLT.HEX.FLGHD |
| 150 | 165850 | | BUSHING.BELLCRANK.GRD.DR |
| 151 | 19133210 | | WASHER |
| 170 | 165849 | | KEEPER.BELT.TRANSAXLE |
| 202 | 72110612 | | BOLT.3/8-16X1.50 |
| 204 | 17060516 | | SCREW |

TRACTOR--MODEL NUMBER 259722

LIFT ASSEMBLY



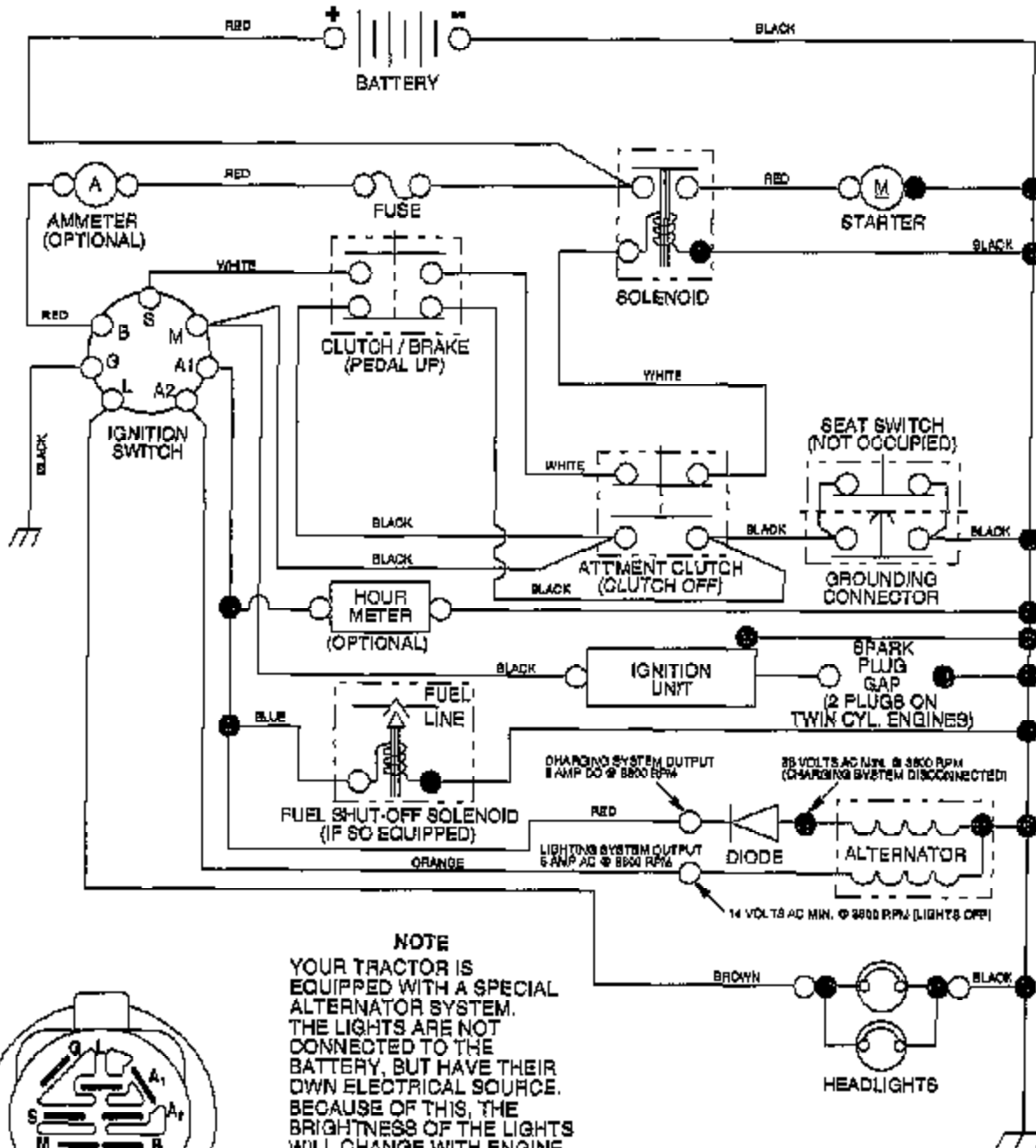
| Ref # | Part Number | Qty | Description |
|-------|-------------|-----|---------------------|
| 1 | 159460 | | WIRE ASM W.SPRING |
| 2 | 159471 | | "SHAFT ASM LIFT,RH" |
| 3 | 105767X | | PIN-GROOVE LT |
| 4 | 12000002 | | SUB= 2225J |
| 5 | 19211621 | | WASHER |
| 6 | 120183X | | NYLON BEARING |
| 7 | 109413X | | GRIP |
| 8 | 124526X | | SUB= 125925X |
| 11 | 139865 | | SUB= 918139865 |
| 12 | 139866 | | SUB= 151140 |
| 13 | 4939M | | SUB= 85902 |
| 15 | 167253 | | LINK, FRONT |
| 16 | 73350800 | | NUT |
| 17 | 130171 | | TRUNION |
| 18 | 73800800 | | NUT.LK.W/WSH.1/2. |
| 19 | 139868 | | ARM SUSP REAR |
| 20 | 163552 | | RETAINER SPRING |
| 31 | 140302 | | BEARING PVT LH |
| 32 | 73540600 | | NUT.CROWNLOCK.3/8 |

| Ref # | Part Number | Qty | Description |
|-------|-------------|-----|-----------------------|
| 1 | 170280 | | MOWER HSG ASSY |
| 2 | 72140506 | | BOLT |
| 3 | 138017 | | BRKT ASM SWAY BAR |
| 4 | 169970 | | BRKT SWAY BAR DECK |
| 5 | 4939M | | SUB= 85902 |
| 6 | 130832 | | SUB= 130833 |
| 8 | 850857 | | BLADE BOLT |
| 9 | 10030600 | | SUB= 10040600 |
| 10 | 140296 | | WASHER.HARD.BLADE |
| 11 | 138497 | | "BLADE.38"" HIPERF" |
| 12 | 129895 | | BEARING.BALL |
| 13 | 137645 | | SUB= 137646 |
| 14 | 128774 | | HSG ASM MANDREL |
| 15 | 110485X | | BEARING |
| 16 | 140329 | | STRIPPER RND MWR |
| 19 | 132827 | | BOLT SHD 5/16-18 |
| 21 | 73680500 | | SUB= 73690500 |
| 23 | 137607 | | BRKT DEFLECTOR |
| 24 | 105304X | | CAP-SLEEVE LT |
| 25 | 123713X | | SPRING TORSION |
| 26 | 110452X | | NUT PUSH M |
| 27 | 106736X428 | | DEFLECTOR, SHIELD |
| 28 | 19111016 | | WASHER |
| 29 | 106735X | | ROD-HINGE T |
| 30 | 157722 | | "SCREW-THD ROLL,WA" |
| 31 | 129963 | | WASHER |
| 32 | 153532 | | PULLEY.MANDREL.38 |
| 33 | 137266 | | SUB= 139729 |
| 34 | STD533717 | | BOLT |
| 36 | 131494 | | FLAT IDLER PULLEY |
| 40 | 73680600 | | SUB= 73690600 |
| 45 | 4497H | | RETAINER M |
| 53 | 130840 | | BRAKE ASM |
| 54 | 133943 | | HARDENED WASHER |
| 55 | 133840 | | IDLER ARM ASSY |
| 56 | 165723 | | SPACER.RETAINER.MOWER |
| 67 | 106932X | | KNOB T(3/8 HOLE) |
| 68 | 144200 | | BELT.V.T-PATH |
| 69 | 76020312 | | SUB= 3145 |
| 86 | 7631J | | RUNNER-LH M |
| 87 | 128772 | | RUNNER RH |
| 88 | 19111216 | | WASHER M |
| 89 | 19131612 | | WASHER GT |
| 107 | 133502 | | RETAINER SPACER |
| 108 | 133503 | | IDLER ARM STIFF |
| 109 | 74760640 | | BOLT |
| 110 | 142587 | | UPSTOP DECK FT 38 |
| 113 | 17060512 | | SCREW |
| 122 | 131289 | | BRAKE ROD LH |
| 123 | 169971 | | ROD |
| 128 | 153390 | | WASHER.FELT. |
| 146 | 165891 | | BOLT |
| 148 | 169022 | | SPRING RETURN IDLER |
| 149 | 165898 | | RETAINER SPRING |
| 150 | 19091216 | | WASHER PM |
| 151 | 169670 | | BRKT CLUTCH CABLE |
| 152 | 172758 | | CLUTCH CABLE |
| 153 | 169674 | | WASHER FLAT |

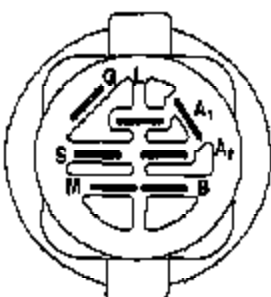
| Ref # | Part Number | Qty | Description |
|-------|-------------|-----|---------------------------------|
| 154 | 169675 | | SPRING RETAINER |
| 155 | 169671 | | SPRING RETENTION LVR CLUTCH CAB |
| 156 | 169672 | | SPACER |
| 157 | 169669 | | ROD.CLUTCH.CABLE.3/8 |
| 158 | 17720410 | | SCREW LT |
| | 130794 | | MANDREL ASM |
| | 170317 | | MOWER DECK, COMPLETE |

TRACTOR -- MODEL NUMBER 259722

SCHEMATIC



NOTE
YOUR TRACTOR IS EQUIPPED WITH A SPECIAL ALTERNATOR SYSTEM. THE LIGHTS ARE NOT CONNECTED TO THE BATTERY, BUT HAVE THEIR OWN ELECTRICAL SOURCE. BECAUSE OF THIS, THE BRIGHTNESS OF THE LIGHTS WILL CHANGE WITH ENGINE SPEED. AT IDLE THE LIGHTS WILL DIM. AS THE ENGINE IS SPEEDED UP, THE LIGHTS WILL BECOME THEIR BRIGHTEST.



IGNITION SWITCH

| POSITION | CIRCUIT | MAKE |
|-----------|---------|------|
| OFF | M+G+A1 | NONE |
| RUN/LIGHT | B+A1 | A2+L |
| RUN | B+A1 | NONE |
| START | B+S+A1 | NONE |

WIRING INSULATED CLIPS

NOTE: IF WIRING INSULATED CLIPS WERE REMOVED FOR SERVICING OF UNIT, THEY SHOULD BE REPLACED TO PROPERLY SECURE YOUR WIRING.

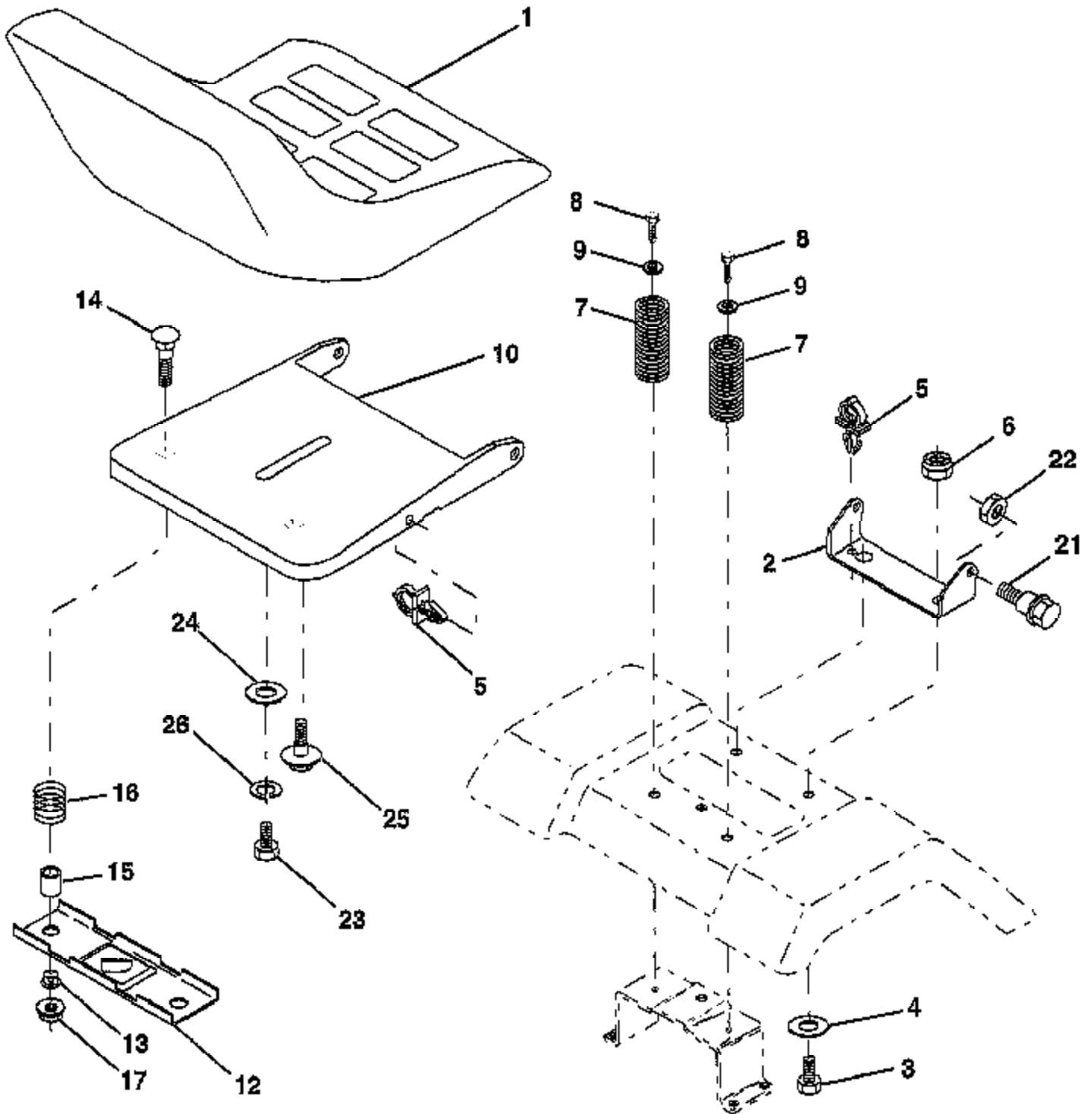
NON-REMOVABLE CONNECTIONS

REMOVABLE CONNECTIONS

| Ref # | Part Number | Qty | Description |
|-------|-------------|-----|----------------|
| | REFER | | REFER TO IMAGE |

TRACTOR -- MODEL NUMBER 259722

SEAT ASSEMBLY

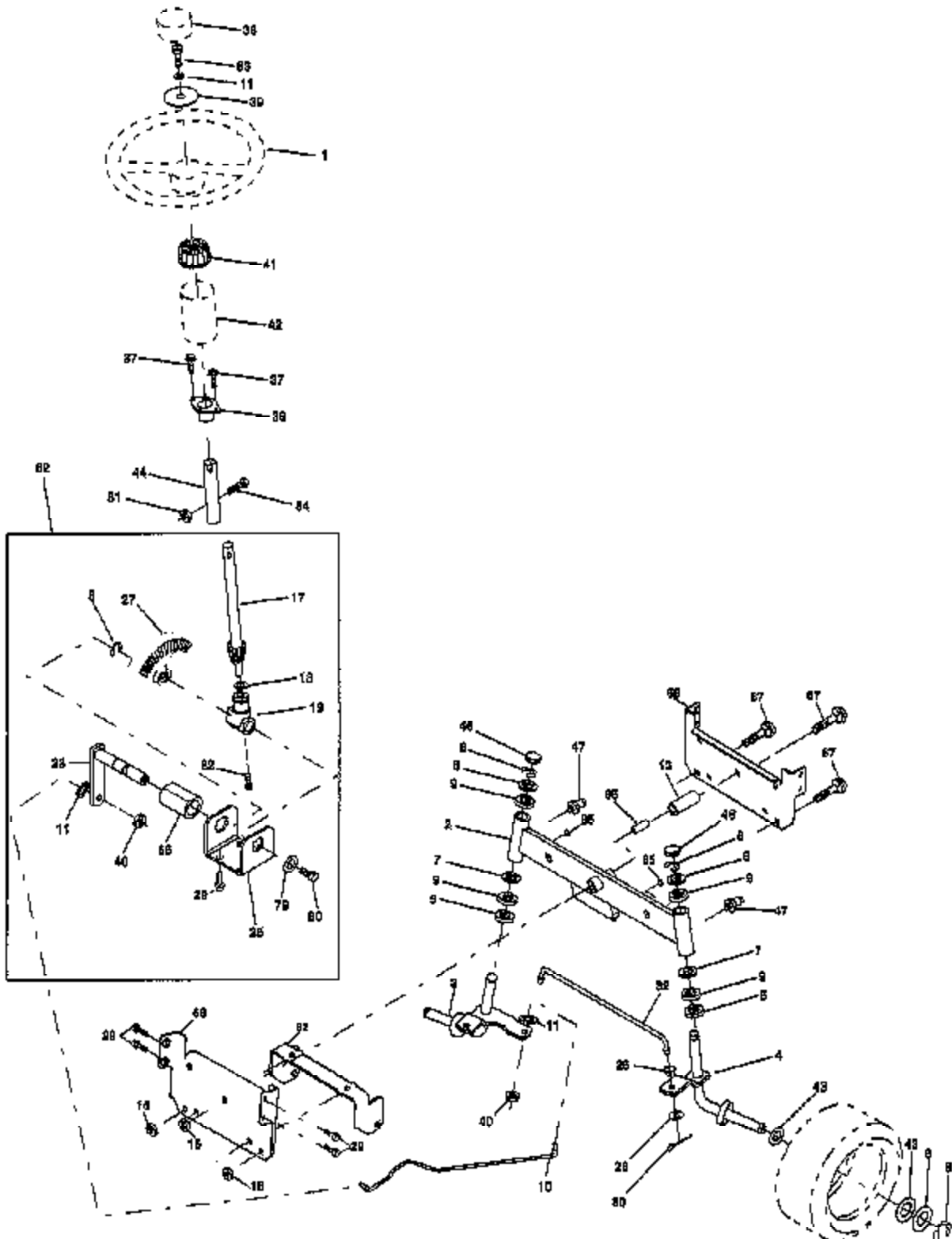


NOTE: All component dimensions given in U. S.
Inches 1 inch = 25/4 mm

| Ref # | Part Number | Qty | Description |
|-------|-------------|-----|-------------------|
| 1 | 127426X | | SUB= 140119 |
| 2 | 140551 | | BRACKET PVT SEAT |
| 3 | 71110616 | | BOLT |
| 4 | 19131610 | | WASHER PM |
| 5 | 145006 | | CLIP.PUSH-IN.HING |
| 6 | 73800600 | | NUT |
| 7 | 124181X | | SPRING COMPRESSIO |
| 8 | 17000616 | | SCREW |
| 9 | 19131614 | | WASHER |
| 10 | 155925 | | PAN-SEAT |
| 12 | 121246X | | BRKT SWITCH |
| 13 | 121248X | | BUSHING |
| 14 | 72050412 | | BOLT-RD HD SQ NK |
| 15 | 134300 | | SPLIT SPACER |
| 16 | 121250X | | SPRING |
| 17 | 123976X | | SUB= 73900400 |
| 21 | 171852 | | BOLT |
| 22 | 73800500 | | NUT |
| 23 | 74780814 | | BOLT |
| 24 | 19171912 | | WASHER |
| 25 | 127018 | | SUB= 127018X |
| 26 | 10040800 | | LOCKWASHER |

TRACTOR - MODEL NUMBER 259722

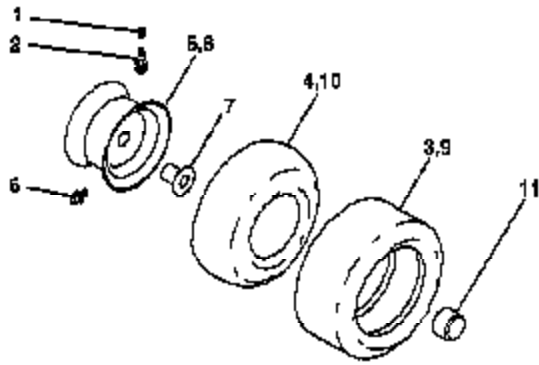
STEERING



| Ref # | Part Number | Qty | Description |
|-------|-------------|-----|------------------------|
| 1 | 140044 | | WHEEL STR AYP BLK |
| 2 | 154427 | | AXLE ASM |
| 3 | 156483 | | SPINDLE.ASM.LH |
| 4 | 157473 | | "SPINDLE ASM,RH" |
| 5 | 6266H | | WASHER .T |
| 6 | 121748X | | WASHER |
| 7 | 19272016 | | WASHER |
| 8 | 12000029 | | RING |
| 9 | 3366R | | COL. SRTG. BEAR. |
| 10 | 169832 | | LINK DRAG |
| 11 | 10040600 | | LOCKWASHER |
| 13 | 136518 | | SPACER BEARING |
| 15 | 145212 | | NUT.HXFLG.LOCK. |
| 17 | 156546 | | SHAFT ASM STEERIN |
| 18 | 57079 | | THRUST WASHER |
| 19 | 160395 | | SUPPORT.SHAFT.STEER |
| 22 | 165857 | | SCREW.HX.WSH.HD |
| 23 | 165851 | | SHAFT.ASM.PITMAN |
| 25 | 154406 | | BRKT-STEERING |
| 26 | 126847X | | BUSHING.DRAGLINK |
| 27 | 136874 | | GEAR SECTOR |
| 28 | 19131416 | | WASHER |
| 29 | 17060612 | | SCREW |
| 30 | 76020412 | | COTTER PIN |
| 32 | 130465 | | TIE ROD |
| 36 | 155099 | | BUSHING.STEERING |
| 37 | 152927 | | "SCREW-TT,10-32 FL" |
| 38 | 140045 | | CAP STEER AYP |
| 39 | 19133812 | | WASHER |
| 40 | 7810H | | GRIPCO NUT |
| 41 | 100711L | | ADAPTER LT |
| 42 | 145054X428 | | BOOT.STEERING.DASH.P/L |
| 43 | 121749X | | WASHER |
| 44 | 153720 | | EXT SHAFT STEERIN |
| 46 | 121232X | | CAP |
| 47 | 6855M | | ZERK M |
| 51 | 73800500 | | NUT |
| 54 | 74780520 | | BOLT |
| 62 | 167902 | | KIT.STEER.ASM |
| 63 | 74780616 | | BOLT |
| 65 | 160367 | | "SPACER BRCAE,AXLE" |
| 66 | 154404 | | "BEARING-ARM,PITMA" |
| 67 | 72140618 | | BOLT RDHD 3/8-16 |
| 68 | 169827 | | BRACE AXLE |
| 79 | 19132012 | | WASHER |
| 80 | 74950612 | | BOLT.HX.NYLON3/8-16X3/ |
| 82 | 169835 | | BRKT SUSP CHASSIS FRT |
| 85 | 133835 | | XMAS TREE FASTNER |

TRACTOR -- MODEL NUMBER 259722

WHEELS AND TIRES



NOTE: All component dimensions given in U. S.
Inches 1 Inch = 25/4 mm

| Ref # | Part Number | Qty | Description |
|-------|-------------|-----|--------------------------|
| 1 | 59192 | | VALVE CAP |
| 2 | 65139 | | VALVE STEM LT |
| 3 | 106222X | | SUB= 122073X |
| 4 | 59904 | | TUBE.5.3/4.5/6 |
| 5 | 106732X427 | | "RIM ASM 6"" FRT" |
| 6 | 278H | | FITTING LT |
| 7 | 9040H | | "FLANGE, BEARING" |
| 8 | 106108X427 | | "RIM AS 8"" REAR" |
| 9 | 124635X | | SUB= 126957X |
| 10 | 7152J | | TUBE.18X9.5-8 |
| 11 | 104757X | | HUB CAP |
| | 144334 | | SEALANT.TIRE 10 OZ. TUBE |